

# Save time.



## Mows all by itself, so you can enjoy other projects.

Indego, the robotic lawnmower with 'Logicut'  
intelligent navigation. Mows quickly and cleanly,  
line by line.



# Quality time.



**Make it your home.** The innovative robotic lawnmower Indego from Bosch. Thanks to its 'Logicut' system, the Indego calculates an efficient route and mows it in clean, parallel lines. While the Indego is working, you can attend to other projects. Simply logical – simply efficient.



**BOSCH**  
Invented for life





You can find an easy-to-understand installation video and PDF guide at:  
[www.bosch-indego.com](http://www.bosch-indego.com)

# The easiest way to create a beautiful lawn.

**Just leave it to the Indego from Bosch.** It mows your lawn, finds its way all by itself and always delivers the perfect cut. How does it achieve this? It's simple – with 'Logicut'. With this technology, the lawn is mapped, an efficient mowing strategy is calculated and the Indego mows the lawn in clean, parallel lines. Following installation, some simple programming is all that is needed to get it ready to do the work for you. Thanks to its efficiency the Indego uses very little power. It doesn't emit any exhaust fumes making it a good choice for you and the environment. And if it finds a branch in its way – that's not a problem either. The Indego will recognise that it has bumped into an object, reverse and then drive around it. It's actually so autonomous that it can charge its lithium-ion battery pack itself from its charger. It also cares for your lawn as the short grass clippings act as a mulch. It can be used in most weather conditions, handles up to 20° slopes, boasts all-round safety features and is protected from theft by a PIN and alarm system. Let the Indego take care of the lawn so that you can take care of other projects.

- ▶ Finds its way all by itself
- ▶ Mows in accurate parallel lines
- ▶ Ensures the perfect cut
- ▶ Simple to install and program
- ▶ Cares for your lawns through mulching
- ▶ Boasts all-round safety features
- ▶ Works in most weather conditions
- ▶ Easily manages up to 20° slopes
- ▶ Protected from theft by a PIN code
- ▶ Saves you time to enjoy other projects





**Mows quickly and  
cleanly, line by line!**

Experience the future today. Simply position the docking station and lay the perimeter wire to define the area to be mowed by the Indego. Then activate your Indego – and you're done. From this point on, the Indego does it all by itself – maps the lawn, calculates the mowing path, determines its location, returns to the docking station for charging when needed and then continues to mow. If it comes across an obstacle, such as a branch or discarded toy, the Indego detects it through its bump sensor and simply goes around it.



### **Efficient, accurate mowing, line by line**

Mowing systematically means mowing efficient. The Indego uses its 'Logicut' technology to calculate a short mowing path and gets mowing in orderly parallel rows. The Indego easily moves through line by line, ensuring that no patch of grass is overlooked or repeatedly mowed. This is kind on your lawn, saves time and power and allows you to enjoy your garden in peace. Simply logical – simply efficient.

#### **Mowing without 'Logicut'**



A random approach is taken when mowing without map-based learning strategy.



# Change your lifestyle and never mow again!

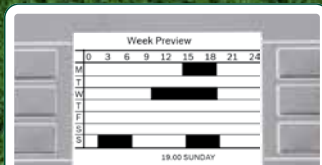
## Convenient at every level

Simply start! The Indego is ready to go in just three simple steps:

1. Position the docking station.
2. Lay the perimeter wire.
3. Activate the Indego – and off it goes!



Perimeter wire



Easy setup



Automatic charging system

## Safe at every level

Three examples of its safety features:

1. The Indego uses a bump sensor to detect obstacles on the lawn to avoid them.
2. When lifted, its mowing blades stop immediately.
3. The Indego is protected from theft by a PIN code and alarm system.



Quick blade stop



PIN protection and alarm system



Obstacle detection bump sensor



### Mowing time (average)

200 m<sup>2</sup> in 2 h  
500 m<sup>2</sup> in 6 h  
800 m<sup>2</sup> in 9 h  
1.000 m<sup>2</sup> in 12 h

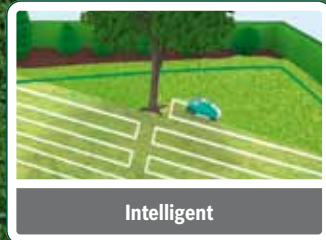
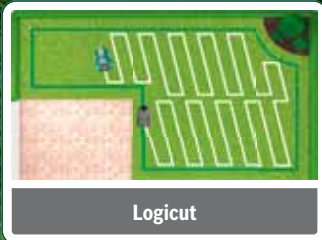
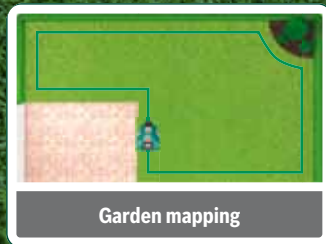




# The Indego finds its way all by itself.

## Clever at every level

Intelligent and efficient! With its 'Logicut' navigation system, the Indego automatically measures the garden and autonomously calculates an efficient mowing path. Line by line, parallel and efficient.



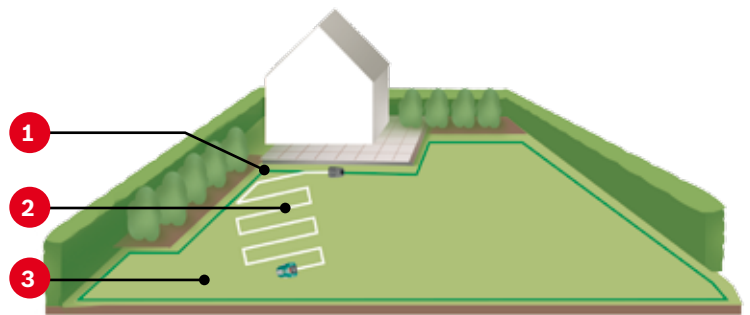
## Practical at every level

Rain or shine, the Indego mows. Even on lawns with up to a 20° slope. And as it clips the grass regularly and just a little each time, only good mulch remains and there's nothing to rake.



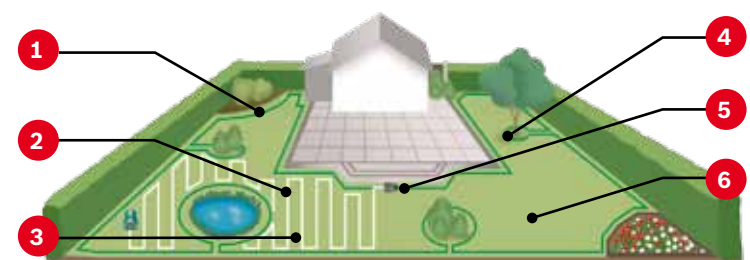
Tree, bush or pond – the Indego adjusts its route to your lawn. Simply lay a perimeter wire around the area to be mowed once – and let it get to work. If there is an obstacle in your garden such as a tree, simply lay the perimeter wire around it. The Indego will remember this obstacle and manoeuvre around it all by itself. The Indego is intelligent enough to work away without supervision and is protected from theft by a PIN code.

## Simple garden



- 1 The **perimeter wire** defines the area to be mowed. Once laid around the lawn, you're in business.
- 2 **Line by line precision** for lawns measuring up to 1000m<sup>2</sup>. Thanks to 'Logicut', the Indego always mows in parallel lines.

## Complex garden



- 3 The Indego keeps the clippings short so all that's left is **good mulch** which acts as a great fertilizer and no raking is needed.
- 4 It remembers **obstacles** and simply goes around them, whether a tree, a bush or a terrace.
- 5 The Indego uses an **auto-matic charging system** which allows it to return to the docking station when the battery is low.
- 6 Easily handles **inclines of up to 20°**, making Indego the ideal solution for sloping lawns.

# Indego robotic lawnmower FAQs

## The Indego robotic lawnmower

### **What type of garden is the Indego recommended for?**

The Indego robotic lawnmower is recommended for use in gardens up to 1000 m<sup>2</sup>, which is equivalent to approximately 4 tennis courts. The Indego is also capable of handling a slope of up to 35% (20°) so should be capable of handling most garden types.

### **How does the Indego cut the grass?**

Unlike other robotic lawnmowers the Indego maps out the shape of the garden and then cuts the grass in a parallel pattern, on the one hand avoiding cutting twice on the same area and on the other hand minimizing areas being left out. When the Indego needs to charge it returns to the docking station.

### **Will the mower cut the grass in rainy conditions?**

Yes, although it is better for the lawn to be cut in dry conditions. It is also recommended to store the Indego inside during stormy or winter conditions.

### **What is included in the box?**

Indego robotic lawnmower, docking station, 200 m perimeter wire, 400 fixing pegs, 4 docking station nails, 2 wire connectors, power supply (unit), isolator key, 4 measuring rulers, instruction manual.

## Setup and how to use the Indego

### **What height of grass can the mower cut?**

The height of cut for the Indego can be adjusted between 20 mm–60 mm. It is recommended that the maximum height of the grass for the Indego should be no more than 100 mm.

### **How do I set up the mowing schedule?**

The Indego can be setup to run on set days in the week and at set times. Up to five schedules are possible, allowing to have a schedule for different seasons.

## Robotic lawnmower safety

### **What happens if the mower is lifted up?**

The Indego Robotic mower has sensors to detect if it's lifted off the ground or drives over a large object on the ground – the cutting system automatically stops when a lift up is detected.

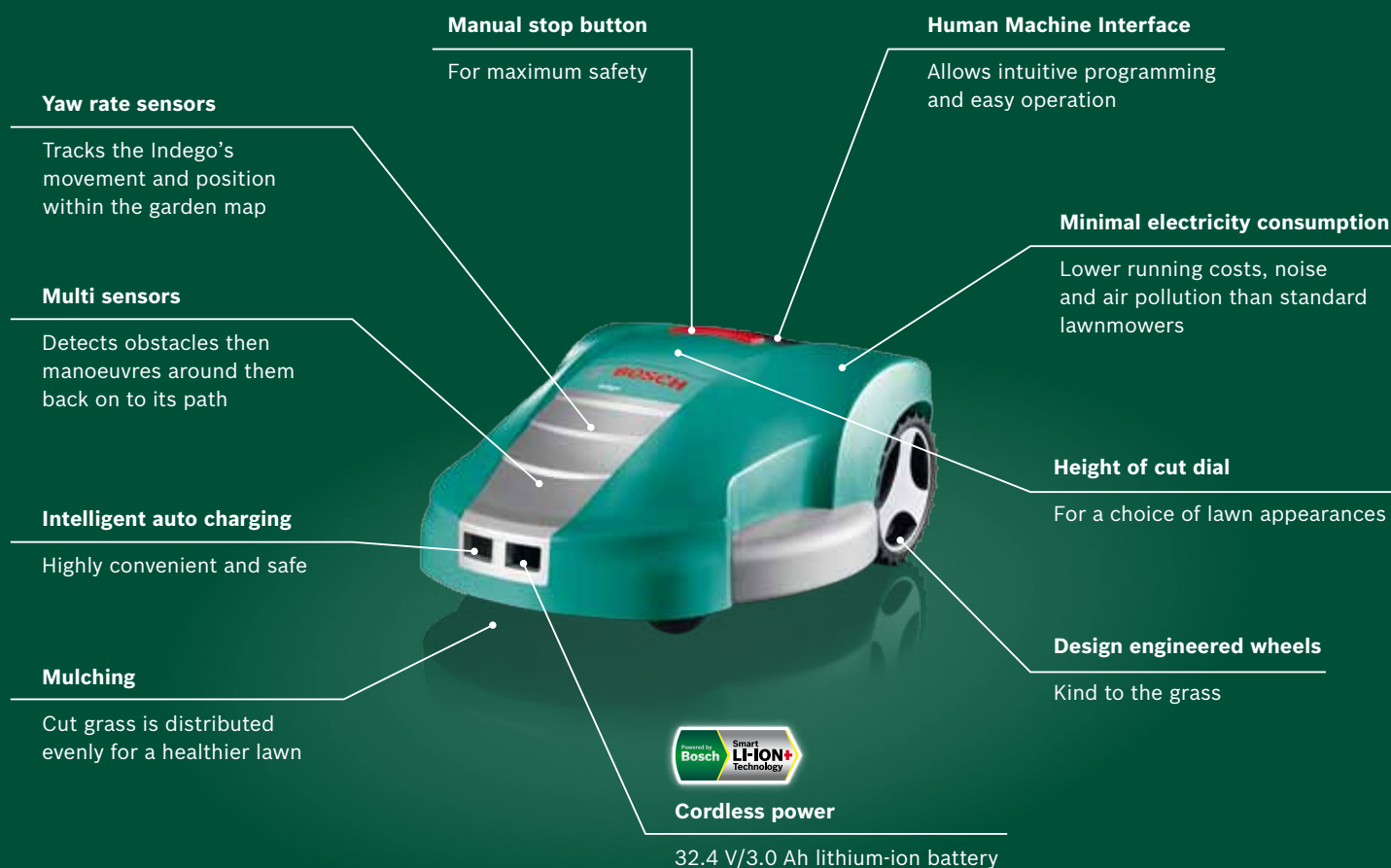
### **What happens if there is an object left in the garden?**

In this scenario the Indego will recognise that it's bumped into an object, reverse and then drive around it and continue on its cutting pattern.

### **What happens if the mower turns over?**

The Indego Robotic mower has sensors to detect if it turns over – the cutting system automatically stops when a lift up is detected.





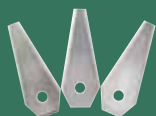
## Accessories



Docking station nails



Fixing pegs



Replacement blades



Perimeter wire



Wire connectors

## Technical features

Power source/Battery voltage	32.4 V/3.0 Ah
Cells per cluster	1.5 Ah, 3.6 V, 18 (x1)
Charging function	Auto
Width-of-cut	26 cm
Weight	11.1 kg
Coverage per charge	200 m <sup>2</sup> (± 20%)
Maximum area of operation	1,000 m <sup>2</sup>
Run time average	50 min
Charge time	50 min
Noise level	Measured: 72 dB(A) Guaranteed: 75 dB(A)
Memory	16 MB
Supplied with	Indego, docking station, 200 m perimeter wire, 400 fixing pegs, 4 x docking station nails, 2 wire connectors, power supply (unit), isolator key, 4 x measuring rulers, instruction manual





[www.bosch-indego.com](http://www.bosch-indego.com)

**Bosch Lawn and Garden Ltd.**  
Suffolk Works  
Stowmarket  
IP14 1EY  
England



**BOSCH**  
Invented for life