



# TUTORIAL

***HOW TO USE THE NODON OCTAN REMOTE  
WITH THE FIBARO SYSTEM  
(HOME CENTER 2 AND HOME CENTER LITE V4)***

*Any question, please contact [support@id-rf.net](mailto:support@id-rf.net)*



Imagine you are sitting comfortably on your sofa and want to turn off the light, adjust a comfortable temperature, put music in background, close your shutters ... Here you have a very simple solution: **Our NodOn Octan Remote**.

With it, you can control all your equipment from its 4 buttons. It is no more necessary to pull out your smartphone, unlock it, find the right app, etc... to just toggle a light!

You will find below a tutorial to use the **NodOn Octan Remote** with the **Fibaro Home Center 2** and **Fibaro HC Lite** gateways.

## **1- OVERVIEW OF THE NODON OCTAN REMOTE**

**The NodOn Octan Remote** has 4 buttons, with 4 possible actions on each button: *Single Press, Double Press, Long Press and Release from Long Press*

You can use the NodOn Octan Remote in 2 different modes:

Standalone Mode: You control your associated devices directly, without involving a Home Automation gateway.

Two profiles are available: Mono (you control a device from 1 button) and Duo (you control a device from 2 buttons).

Gateway Mode: You control the devices included in your Z-Wave network with your **NodOn Octan Remote**, through your Home Automation gateway, using scenes or eventually direct associations.

Using the advanced “Z-Wave Plus” technology, this remote can therefore easily be used in different rooms of your home thanks to its optimized communication range. With its embedded magnet, you can place your remote control on any suitable surface (refrigerator, central unit of a computer etc.) or on a wall, using its magnetic mounting support.



### **Here are the technical characteristics of this remote control:**

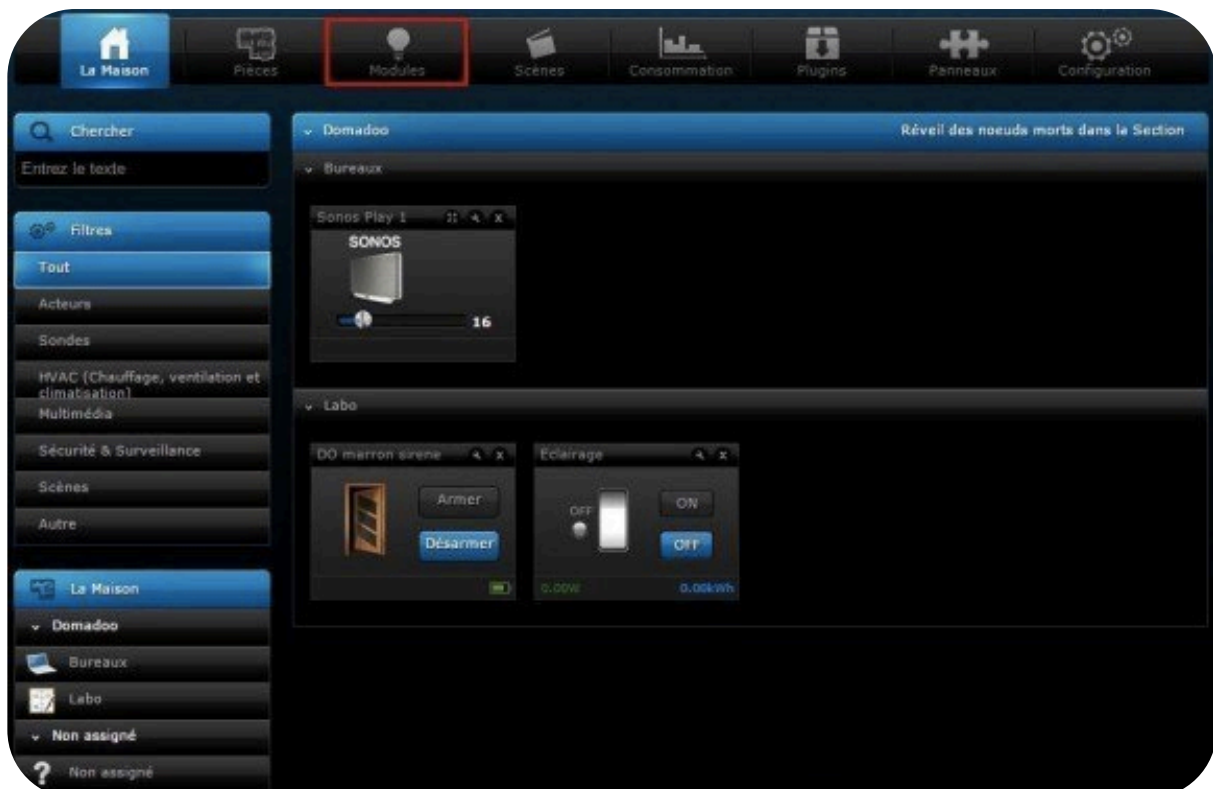
- Power: CR2032
- Battery Life: 1.5 to 2 years
- 4 buttons
- Wall support, mounted by 3M sticker (included) or screws (not included)
- Built-in magnet for mounting on metal surface
- Operating temperature 0 °C to 40 °C / Altitude: 2000m
- Z-Wave® Radio protocol: 868.4MHz - 500 Series – Z-Wave Plus® certified
- Range: 40m indoor / outdoor 80m
- Dimension: 80 \* 80 \* 15mm
- Warranty: 2 years

## **2- INCLUSION OF THE REMOTE INTO FIBARO NETWORK**

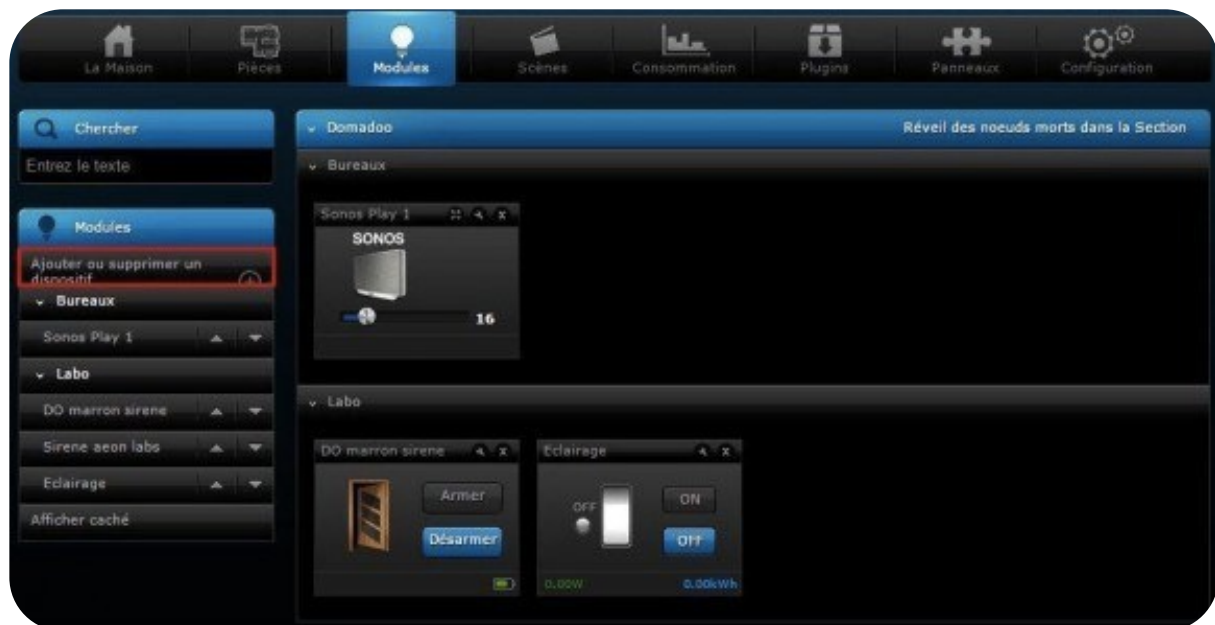
*Careful, this remote control works with the V4 of Fibaro system*

In order that your remote control can act on the Z-Wave devices of your network, you must include it within your network.

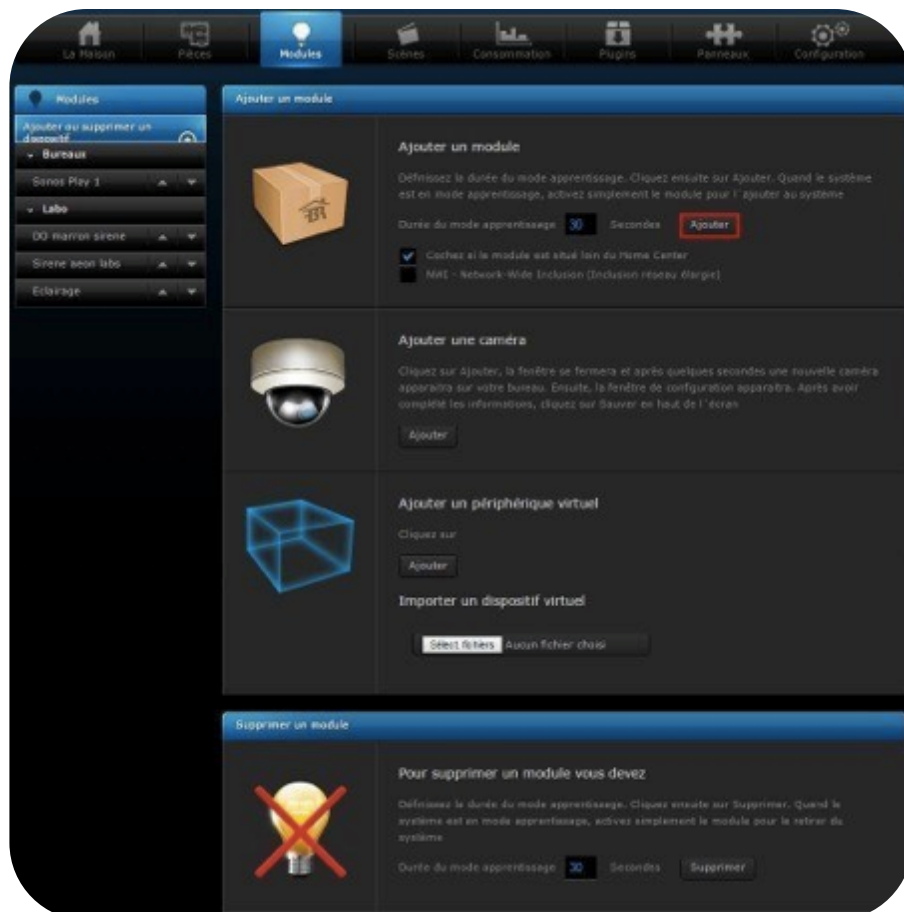
To do so, click on the “Devices” tab in your Fibaro interface.



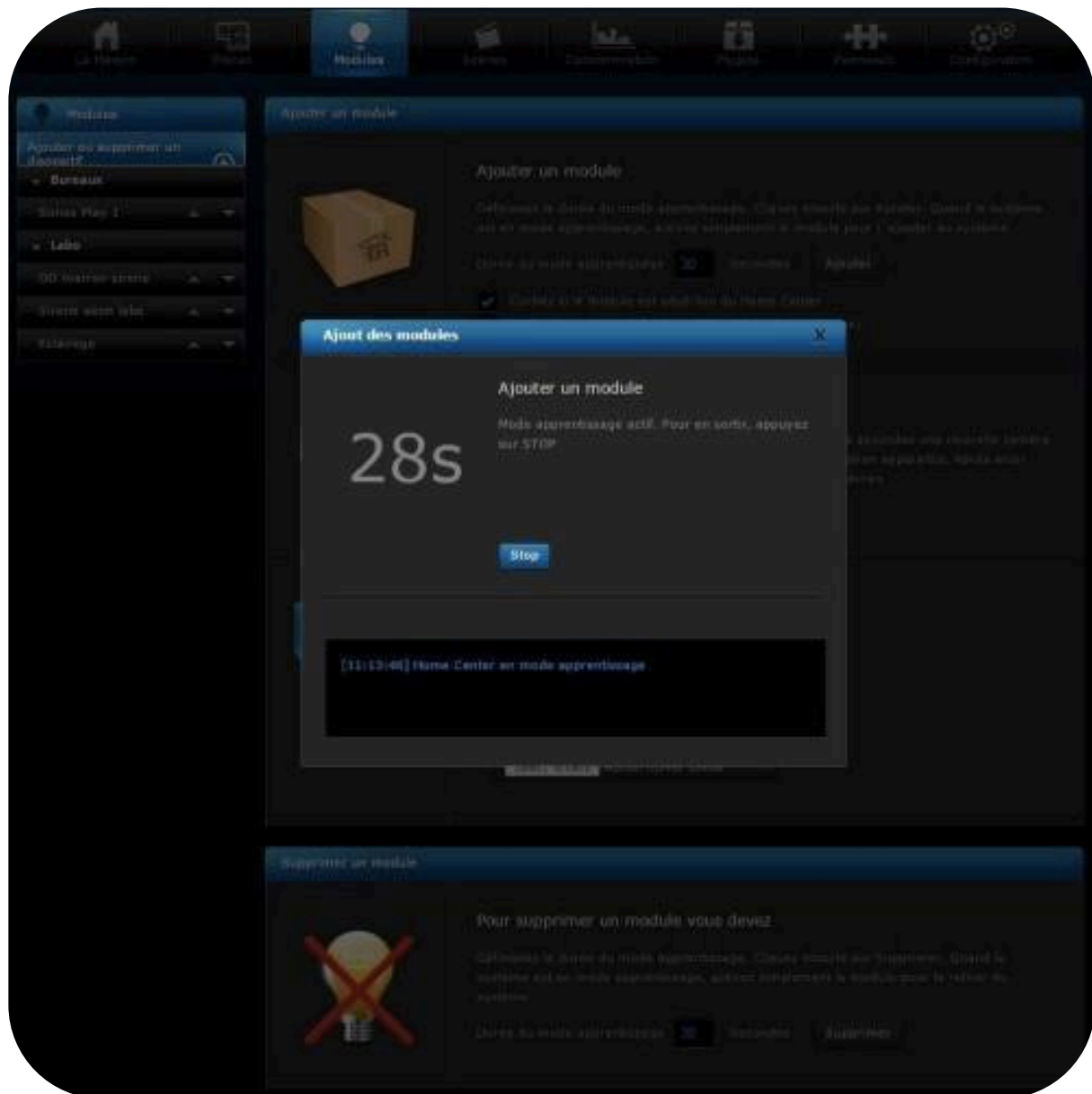
In this tab, click "Add or remove a device."



Then click "Add" in "To add device you should" (before Inclusion, it is advisable to make an Exclusion to ensure that the remote control is not included in another Z-Wave network. To achieve this Exclusion, you need to click "Delete" and exclude your remote control when the countdown is displayed).



A countdown appears indicating that you must include your remote control during this period.



Simultaneously press the buttons • and + of the remote control for 1 second.



The LED glows in pink to confirm the selection. Then press the button •

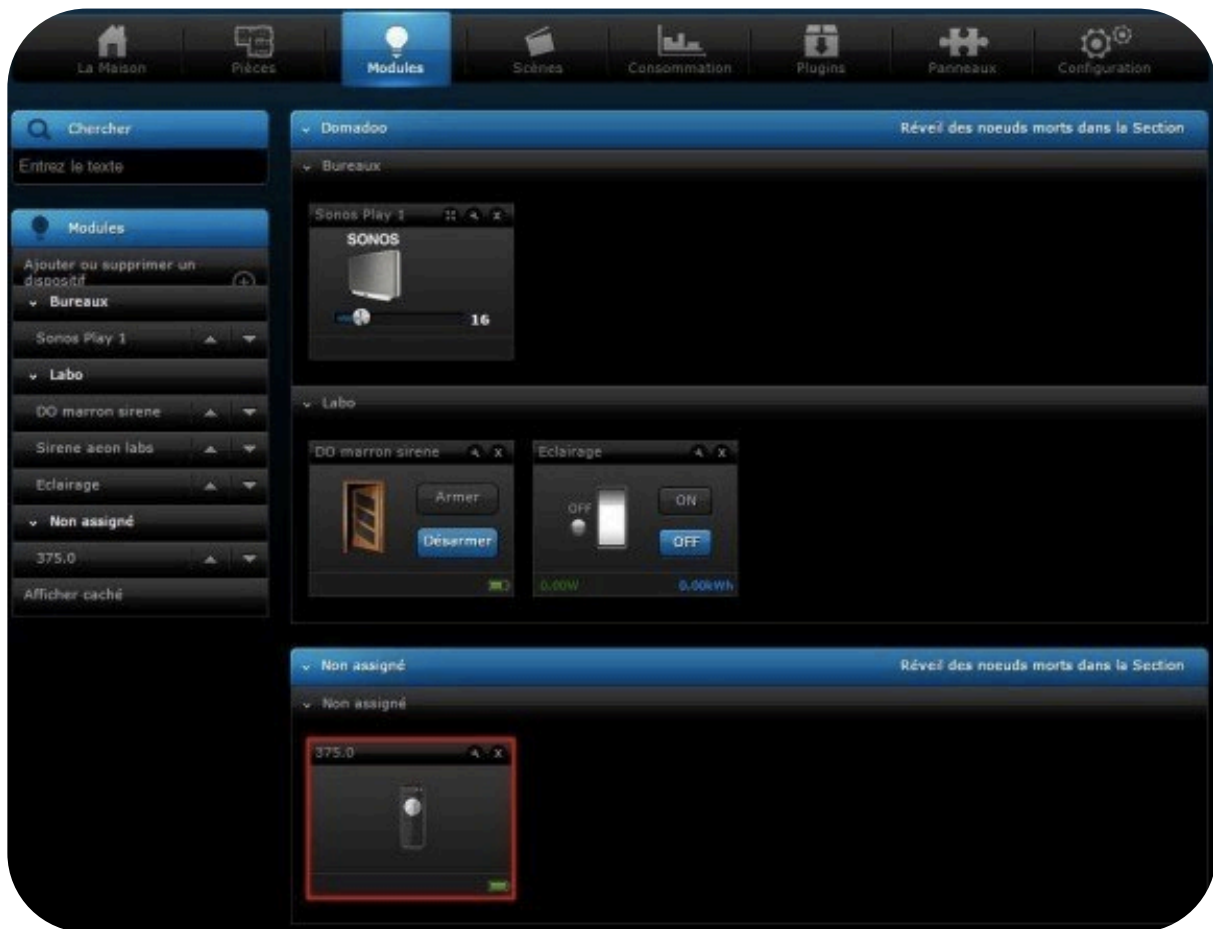


The LED blinks in pink to confirm the selection, then in green to confirm the Inclusion process (after around 20sec)

For details about the Learning mode (Inclusion / Exclusion) of the Octan Remote, please refer to its User Guide.

**THE INCLUSION PROCESS MUST BE DONE CLOSE TO THE FIBARO GATEWAY**

Your NodOn Octan Remote is now included in the Z-Wave network of your Fibaro HC2 or HC Lite, and is displayed on your interface.



### **3- SET-UP THE OCTAN REMOTE**

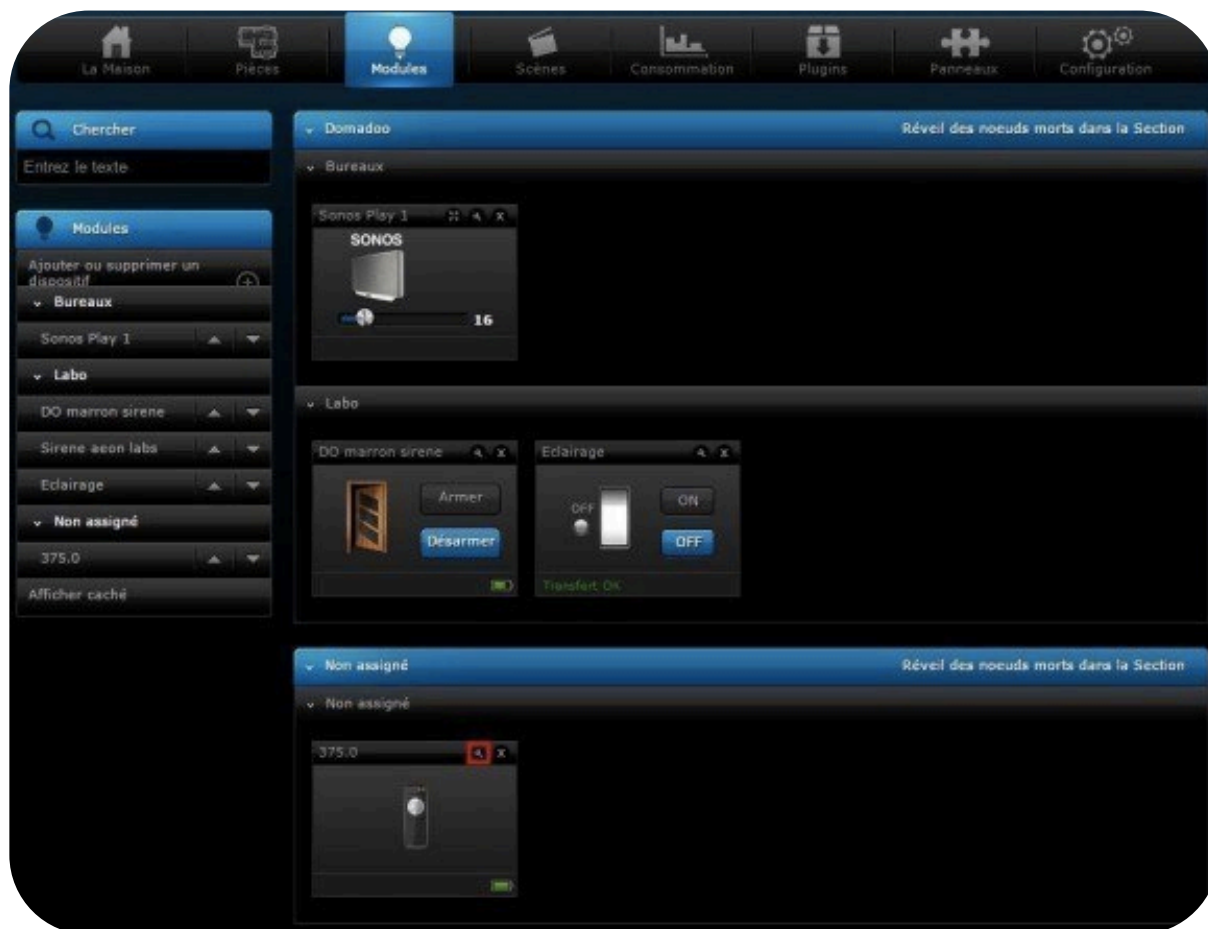
After the inclusion of your remote in the Z-Wave network of your Fibaro system, you can change the settings for customized use.

#### **Important:**

To use the Octan Remote with Fibaro system (HC2 or HC Lite), you must change the default value of the configuration parameter #3 – Scene Mode - entitled "Central Scene" by "Scene Activation".

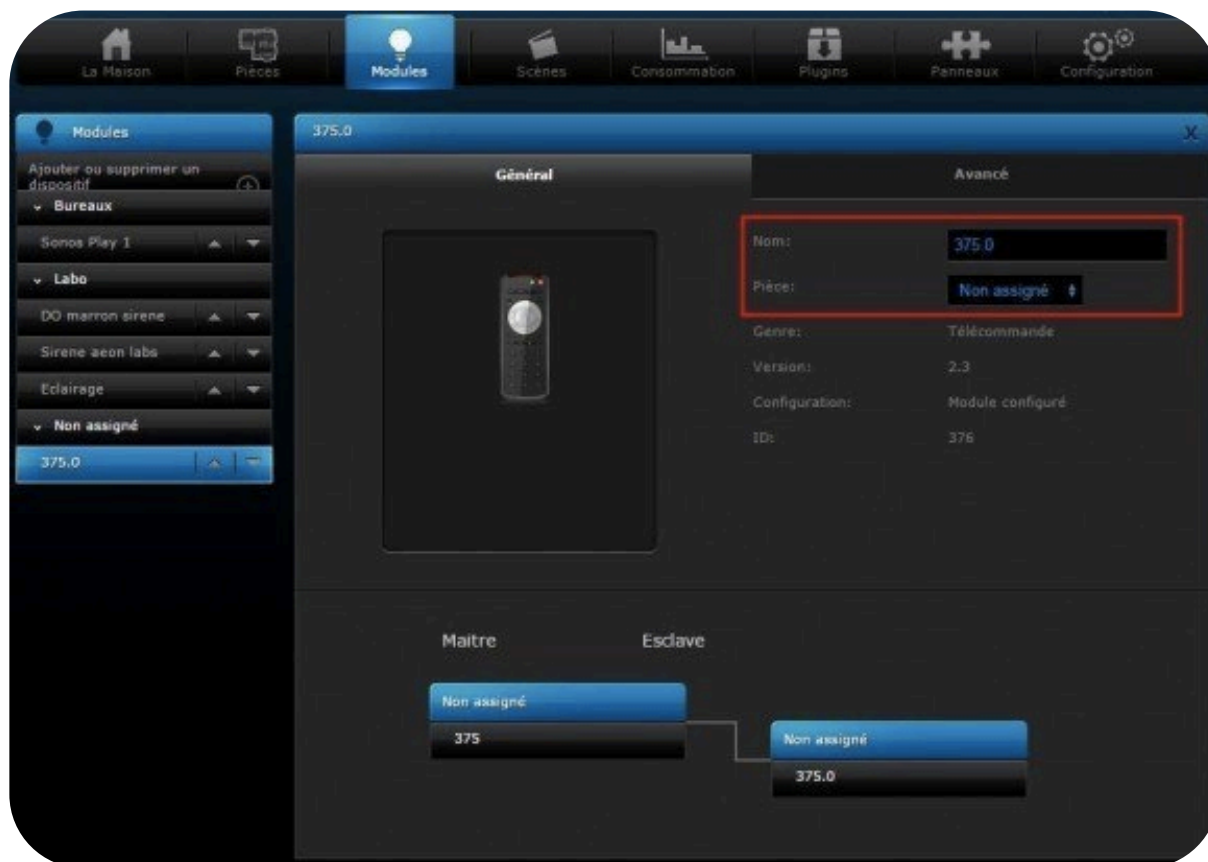
(Fibaro System doesn't support the new "Central Scene" command class). In terms of use, you will still have a full access of all the Remote's features.

To change the configuration parameter #3 (or any other parameter), click on the “tool” icon of your device (as below)

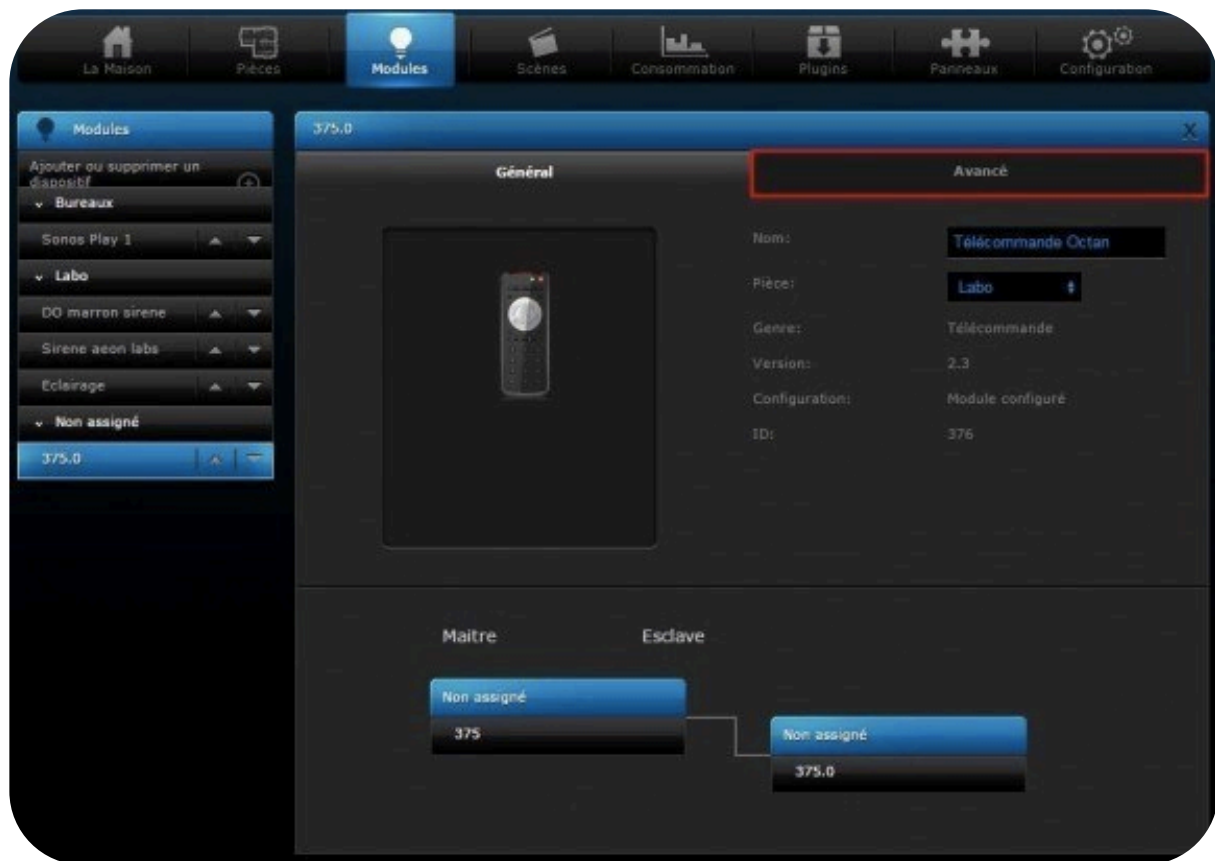




In "General", you can change the name of the remote and the room where it is located.

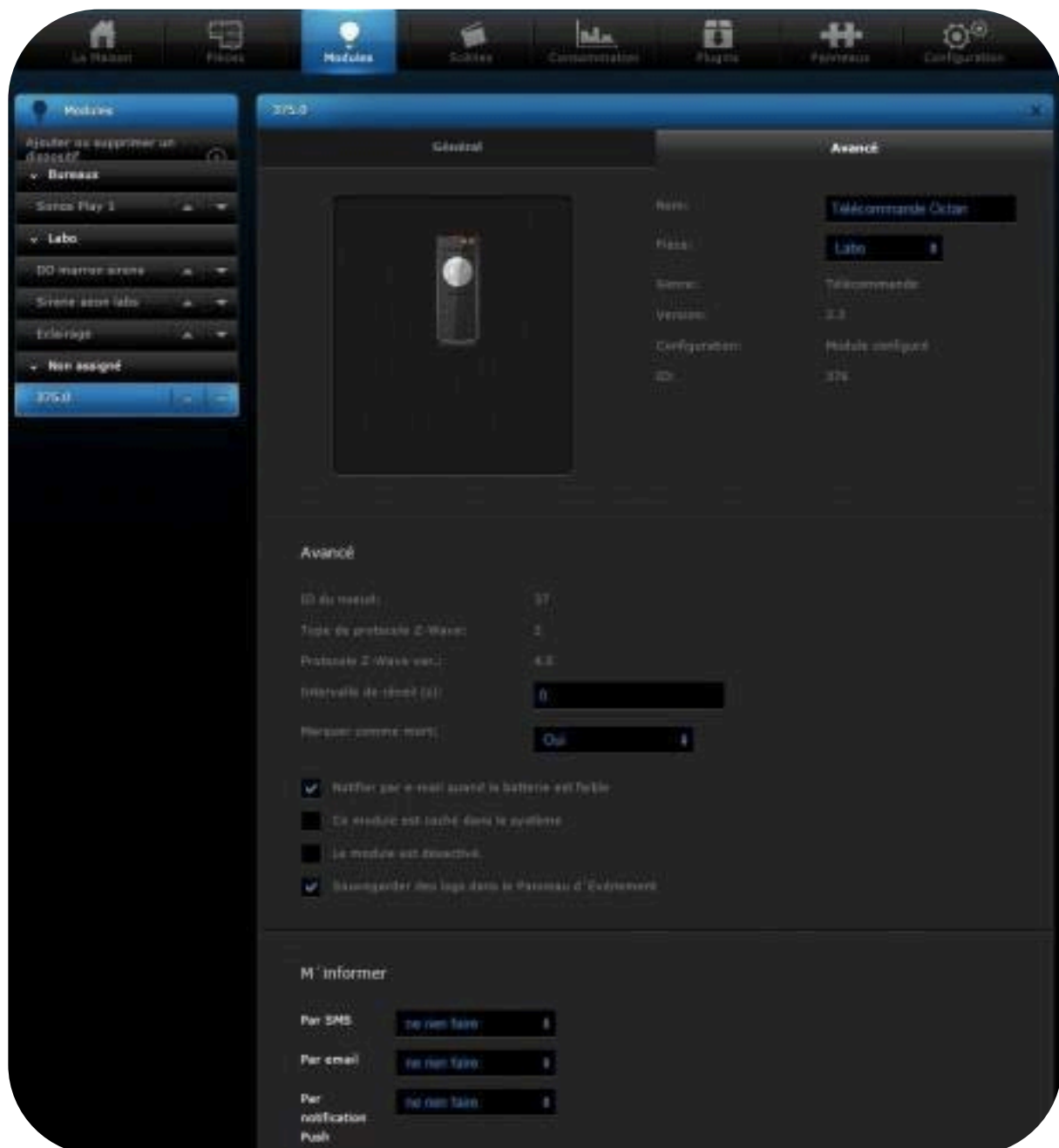


Then click on "Advanced".



In this category you can view and configure additional settings:

- Advanced
  - o Mark as “dead”
  - o Notify by e-mail when the battery is low
  - o Hide the device in the system
  - o Save logs to Event Panel
- Notify me
  - o By SMS: You are informed by SMS for any action on the remote.
  - o By Email: You are notified by email for any action on the remote.
  - o By Push notification (through the Fibaro App)



- Device description: You can describe your device.
- Associations: You can create direct associations between a button and a Z-Wave device (Please refer to User guide for Associations Groups)

Description du module

Associations

Groupe ID: 1

Configuration 1

Voir 1

Groupe ID: 2

Configuration 1

Voir 1

Groupe ID: 3

Configuration 1

Voir 1

Groupe ID: 4

Configuration 1

Voir 1

Groupe ID: 5

Configuration 1

Voir 1

Groupe ID: 6

Configuration 1

Voir 1

Groupe ID: 7

Configuration 1

Voir 1

Ajouter groupe

Configuration

L'appareil ne dispose pas d'un modèle ce qui pourrait avoir des fonctionnalités limitées, veuillez contacter le support technique afin d'ajouter le modèle de ce dispositif.

- Configuration: You can modify at any time the settings of your remote control by clicking on "Add Parameter".

### **Here are the parameters:**

Parameter # 1: Buttons 1 & 3 profile (default: 0).

- Value 0: Scene – Control your devices through the gateway, using Scenes.
- Value 1: Mono – Control your devices in direct Association, according to Mono profile
- Value 2: Duo – Control your devices in direct Association, according to Duo profile

Parameter # 2: Buttons 2 & 4 profile (default: 0).

- Value 0: Scene – Control your devices through the gateway, using Scenes.
- Value 1: Mono – Control your devices in direct Association, according to Mono profile
- Value 2: Duo – Control your devices in direct Association, according to Duo profile

Parameter # 3: Type of Scene (default: 0)

- Value 0: Central Scene – Newest scene management class
- Value 1: Activate Scene – Old scene management class, **used by Fibaro System**

Parameter 4: Configure the behaviour of Button 1 when set in Mono profile (default: 0)

- Value 0: Control Group 2
- Value 1: All Switch ON
- Value 2: All Switch Off

Parameter 5: Configure the behaviour of Button 2 when set in Mono profile (default: 0)

- Value 0: Control Group 3
- Value 1: All Switch ON
- Value 2: All Switch Off

Parameter 6: Configure the behaviour of Button 3 when set in Mono profile (default: 0)

- Value 0: Control Group 4
- Value 1: All Switch ON
- Value 2: All Switch Off

Parameter 7: Configure the behaviour of Button 4 when set in Mono profile (default: 0)

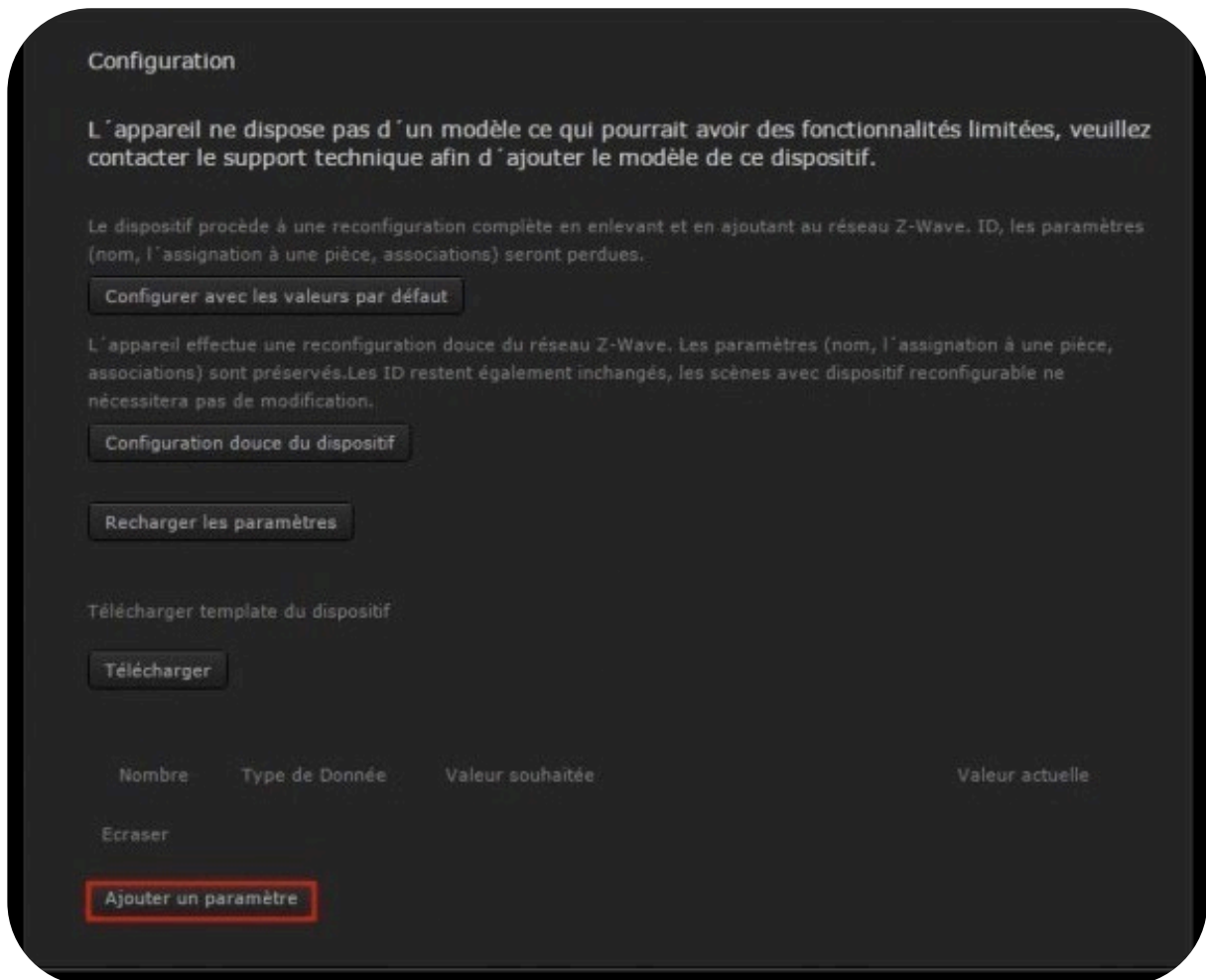
- Value 0: Control Group 5
- Value 1: All Switch ON
- Value 2: All Switch Off

Parameter 8: LED Management

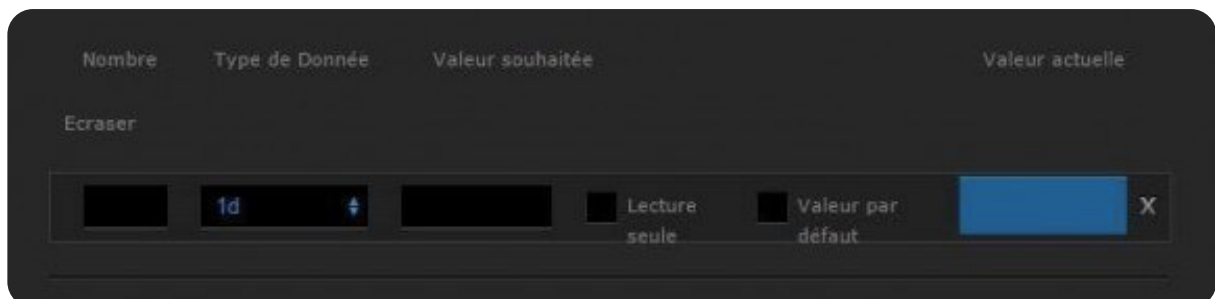
- Value 0: No LED
- Value 1: Flash blue after each press
- Value 2: Flash to confirm an order
- Value 3: Enable both options (1 and 2)

As mentioned earlier, it is imperative with Fibaro system to change parameter #3 (Scene type) to "Scene Activation", to enjoy the **NodOn Octan Remote**

So we click "Add Parameter".



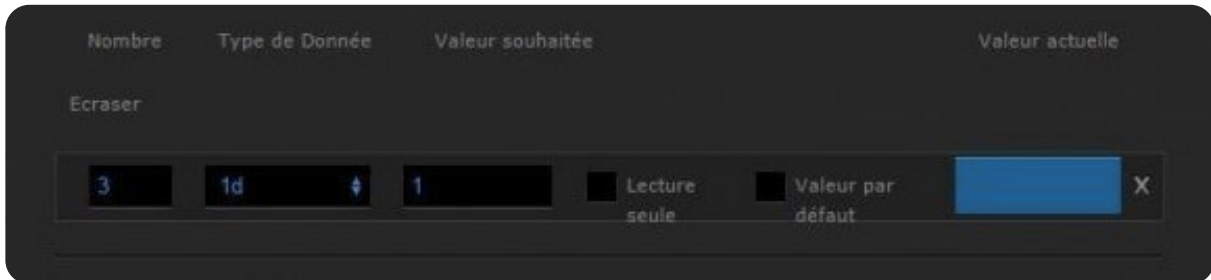
Black boxes appear



You have to fill those with the following values

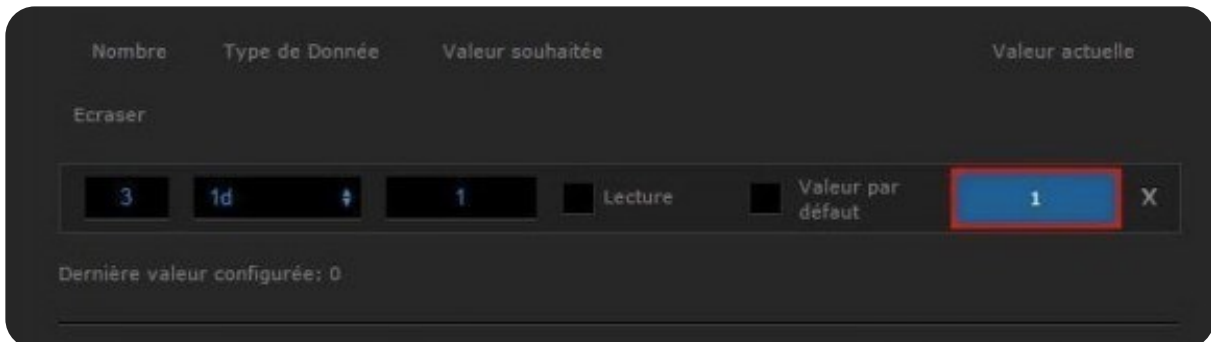
- Number: 3
- Data type: 1d
- Value: 1 (Scene Activation Mode)

After inputting the right values above, save using the “floppy disk” icon on the right side of your interface, and **push any button of the Octan Remote, placed close to your Fibaro gateway, in order to update the settings.**



The screenshot shows a dark-themed settings interface. At the top, there are four labels: "Nombre", "Type de Donnée", "Valeur souhaitée", and "Valeur actuelle". Below these, there is a section labeled "Ecraser". The main configuration area contains several elements: a numeric input field with the value "3", a dropdown menu showing "1d" with a small upward arrow, another numeric input field with the value "1", two checkboxes labeled "Lecture seule" and "Valeur par défaut" (both are unchecked), and a blue rectangular button with the value "1" and a close icon "X" to its right.

Once the remote is updated, the value "1" appears in the blue rectangle. Your setting change has been taken into account and you can now use your remote to control the devices in your home.



This screenshot shows the same settings interface as the previous one, but with the value in the blue rectangle updated to "1". Additionally, a red rectangular border highlights the blue button. Below the configuration fields, there is a label "Dernière valeur configurée: 0".

## 4- USING THE SCENE FEATURE OF THE REMOTE

We strongly advise you to use Scene to enjoy perfectly the features of the **NodOn Octan Remote**.

With this remote, you can control any home equipment: shutters, heaters, lighting, AC or any electrical appliance.

This remote gives you access to 16 different scenes, which make it very upgradable and flexible.

Here we will create a Scene example with below behaviour

- When I push once on button 1 while my light is OFF, then it turns ON
- When I push once on button 1 while my light is ON, then it turns OFF

To create this Scene, go on your Fibaro system interface and select the “Scenes” tab.

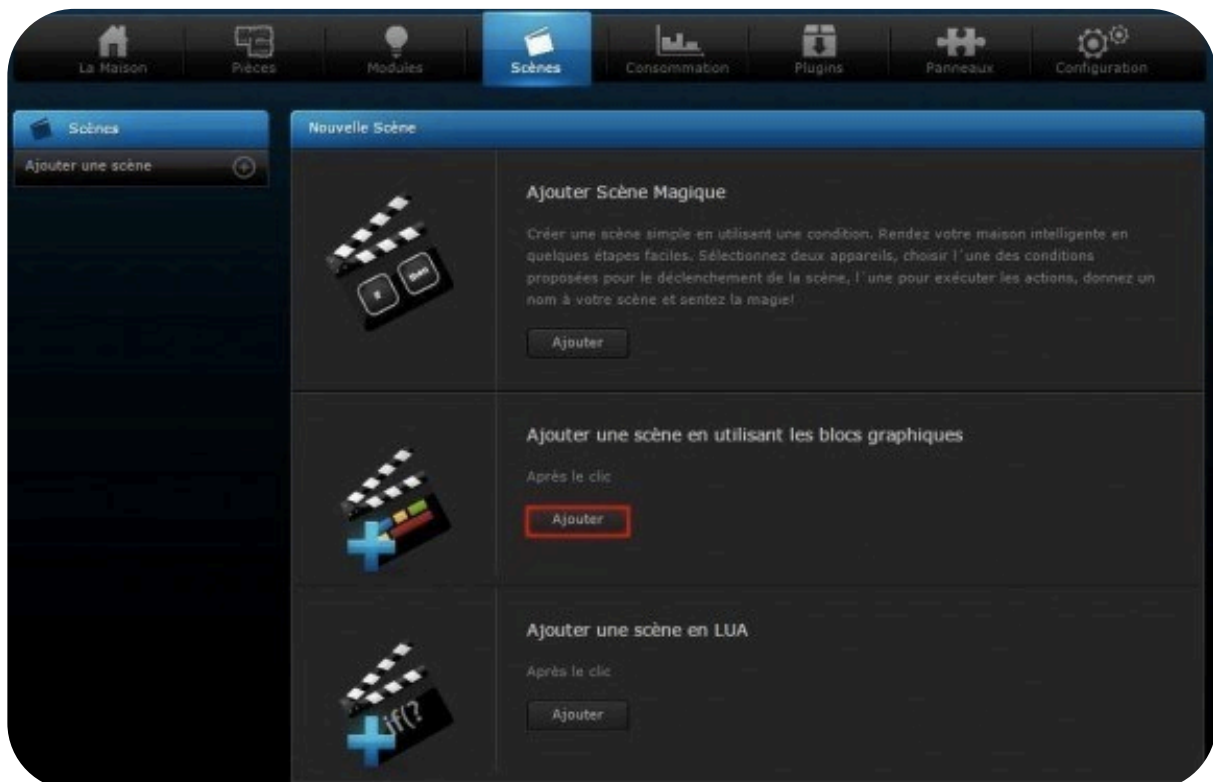




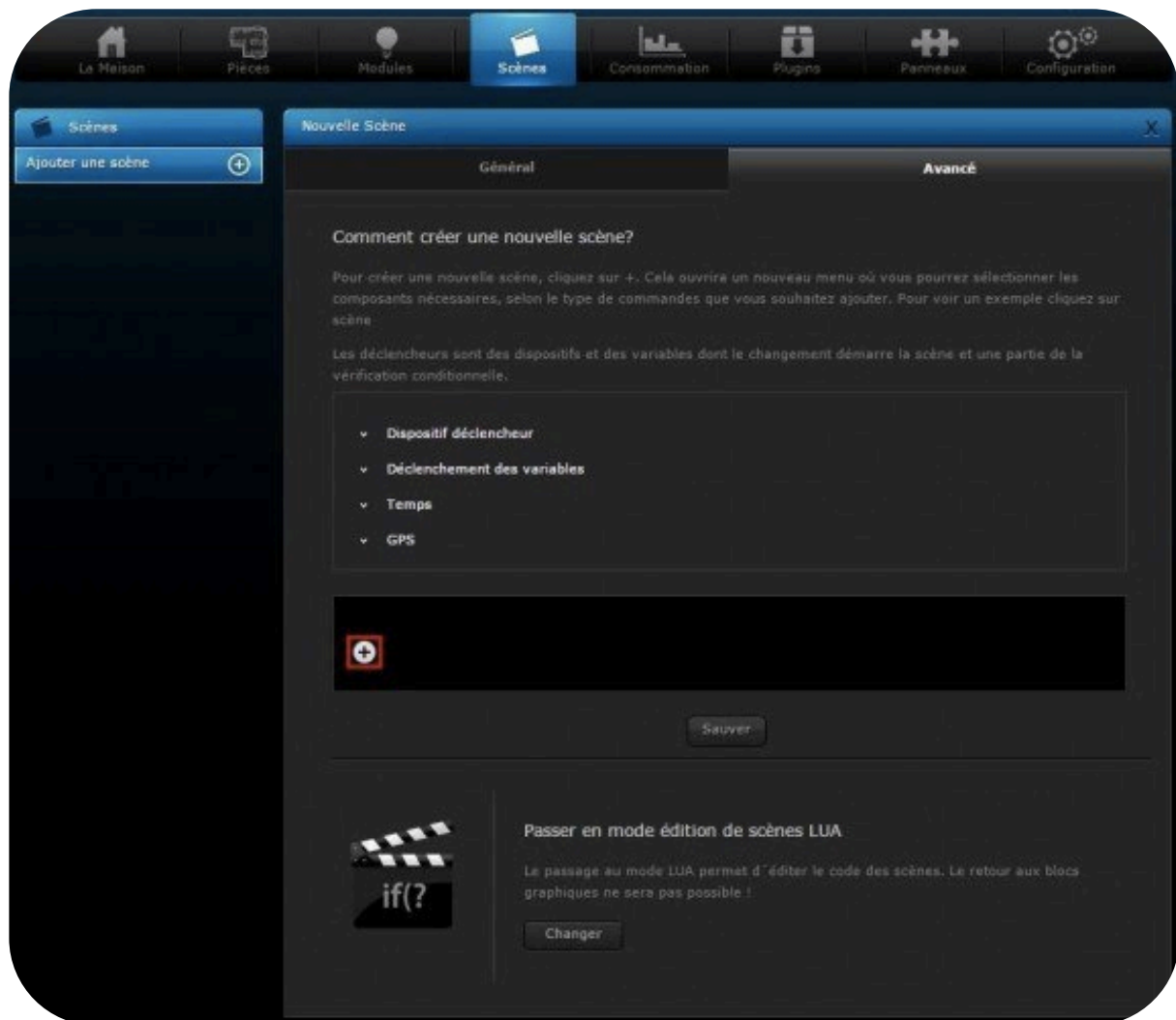
Then click "Add Scene".



Then choose "Add scene using graphic blocks"

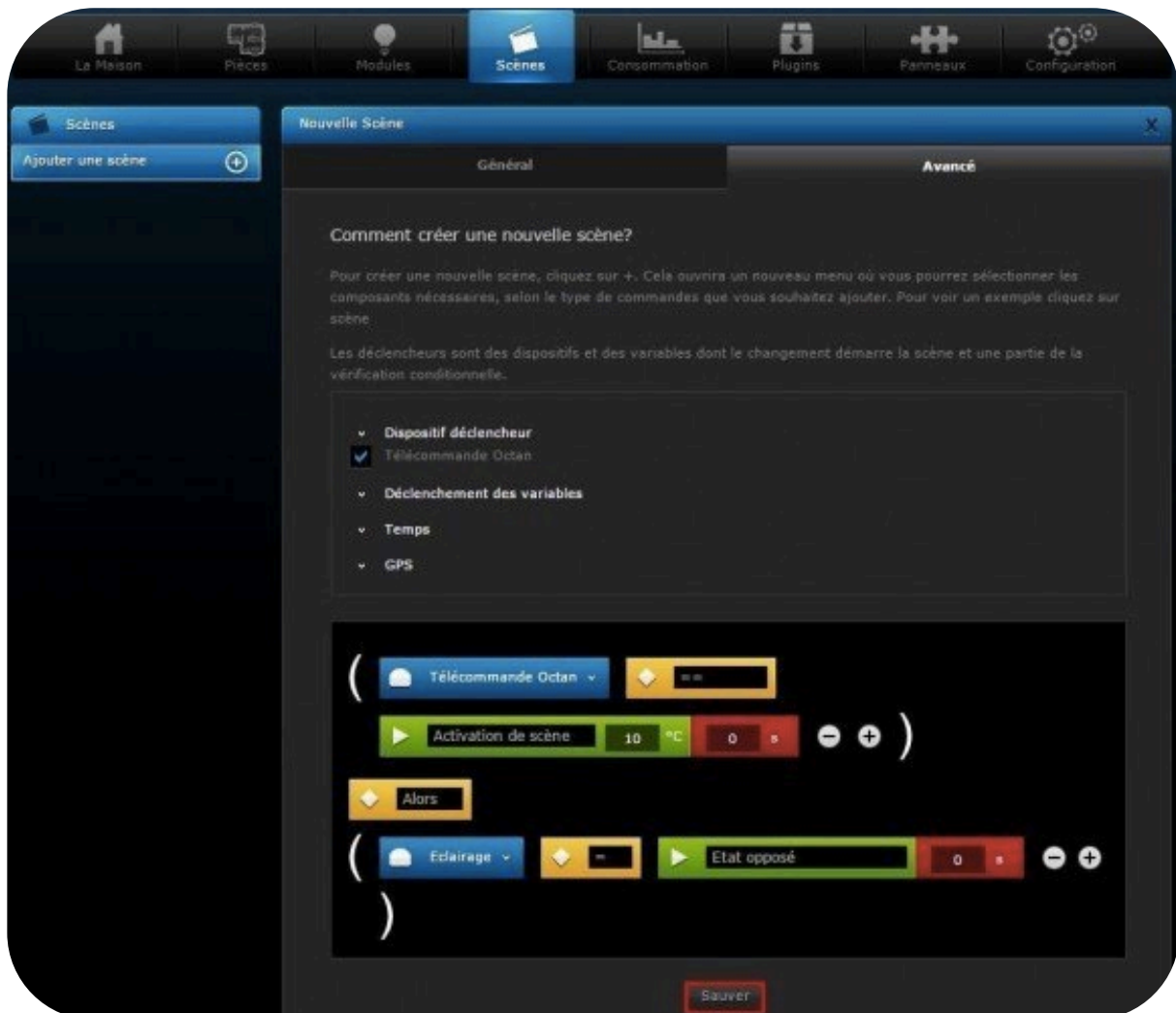


Click the "+" icon to create your scene.



Below the example. We select the trigger “Telecommande Octan” with the ID value “10”, corresponding to a single Press on Button 1 of our remote. Then we select our lighting device actuator as the device which will change its status by its opposite (ON or OFF).

We click on “Save” to validate our Scene.



Here is the summary table of the corresponding IDs for each of the 16 possible actions on your remote (above we chose ID=10 for Single Press on Button 1).

Action / Button pushed	Single Press	Double Press	Hold Press	Hold Released
Button 1	0x10	0x13	0x12	0x11
Button 2	0x20	0x23	0x22	0x21
Button 3	0x30	0x33	0x32	0x31
Button 4	0x40	0x43	0x42	0x41

## **5- CONCLUSION**

You can now use all the features of the NodOn Octan Remote with your Fibaro system. Take the time to read completely the User Guide as well, to make sure you have all the necessary information.

The 2 others portable controllers of NodOn (Soft Remote and Wall Switch) are working in the exact same manner as the NodOn Octan Remote, once the Inclusion is done. You can apply above tutorial. For Learning modes (Inclusion / Exclusion) of the Wall Switch and the Soft Remote, please refer to the relevant User Guide.



Soft Remote NodOn (Z-Wave Plus®)



Wall Switch NodOn (Z-Wave Plus®)

If you have any question, please contact us on [support@id-rf.net](mailto:support@id-rf.net)

NodOn® is a trademark of ID-RF SAS

[www.nodon.fr/en](http://www.nodon.fr/en)