



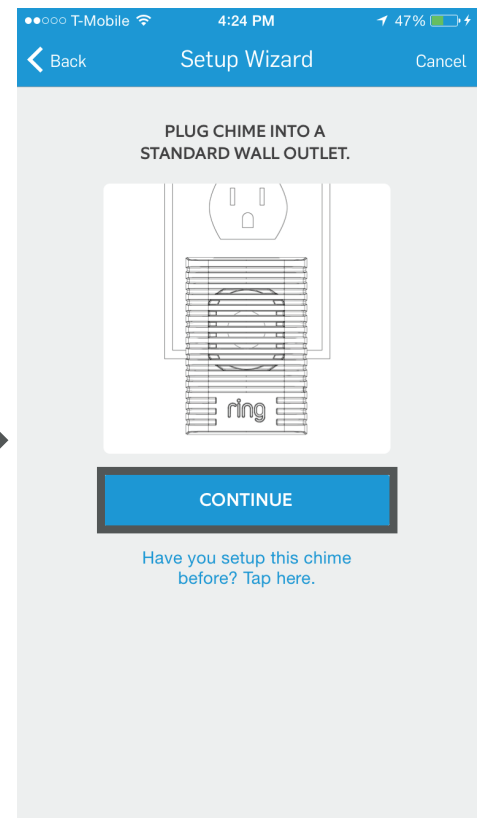
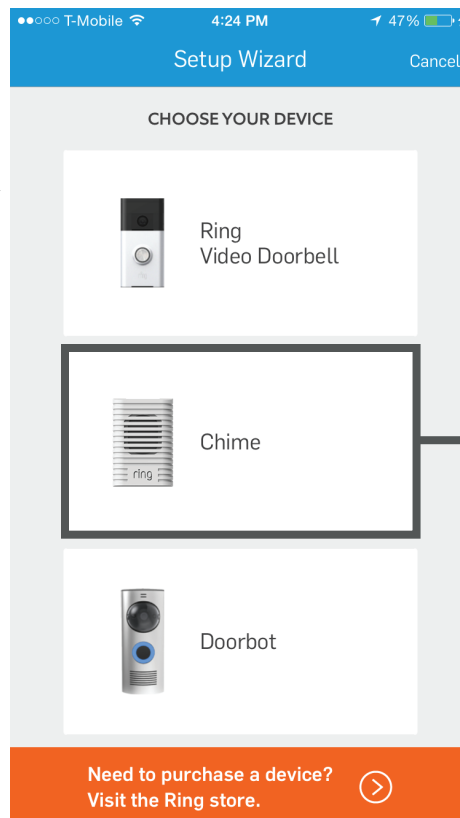
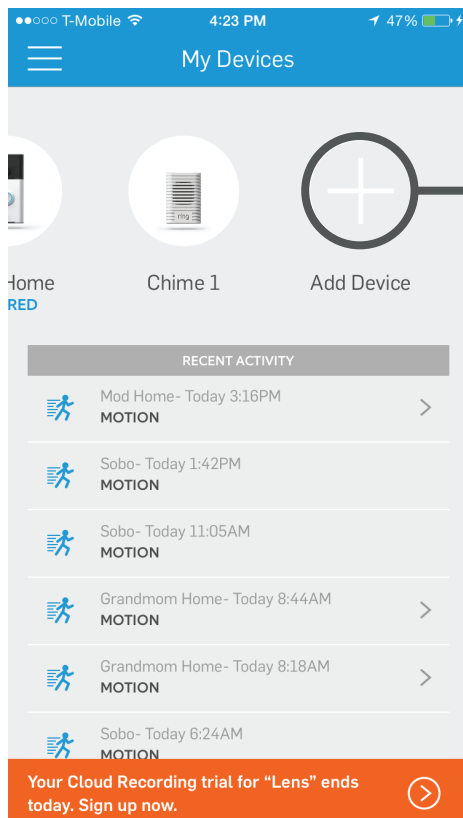
ring CHIME
SETUP



ring CHIME SETUP

CHIME WI-FI SETUP

1. Find the **Add Device** Button located on the main dashboard of the Ring App.
2. Select Chime
3. Plug Chime into a standard wall outlet.
 - Follow these instructions if you have not set up this Chime before
 - If you have set up a Chime before, click on the link below the continue button, "[Have you setup this Chime before? Tap here.](#)"

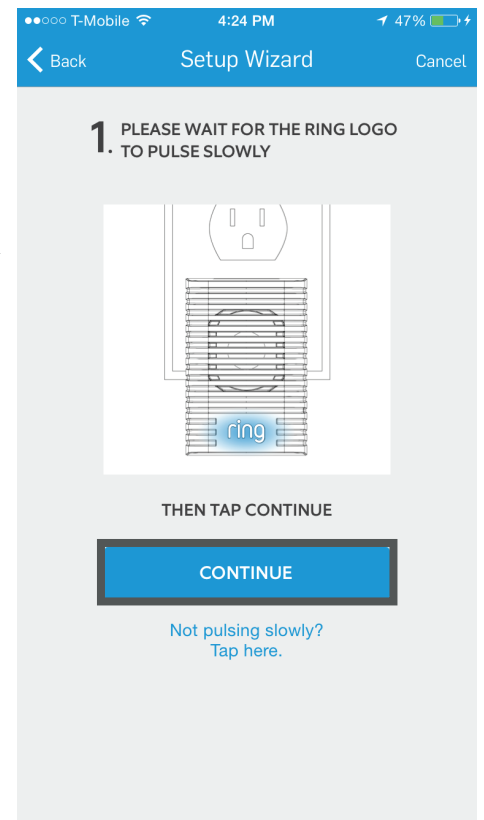
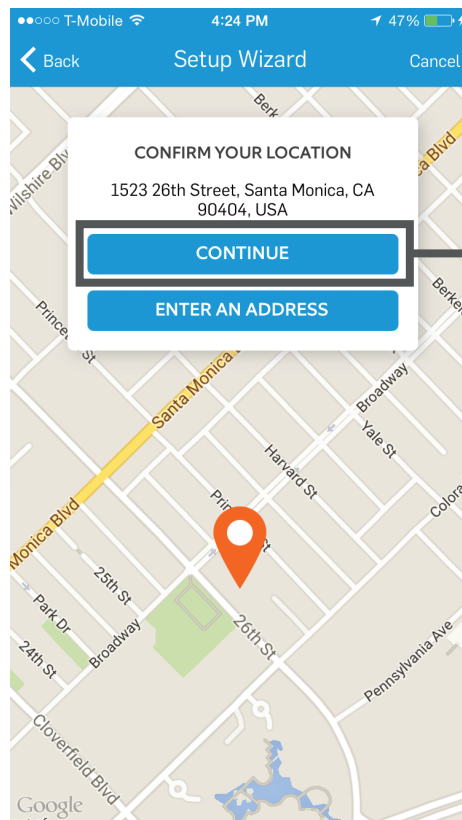
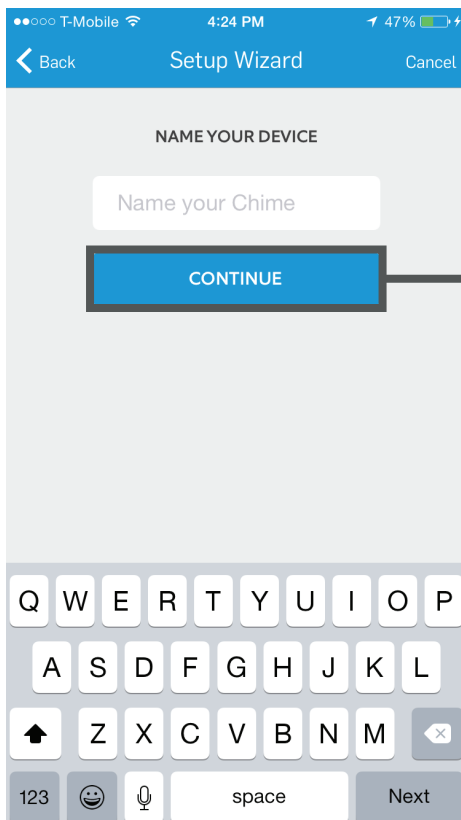


ring

CHIME SETUP

CHIME WI-FI SETUP

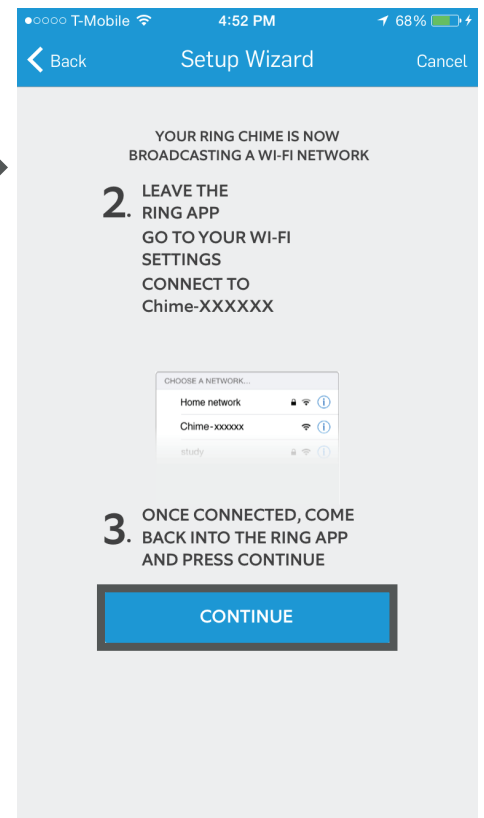
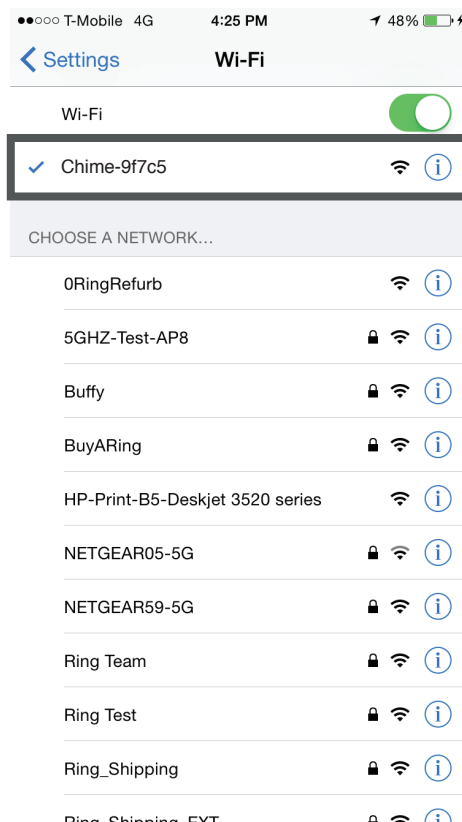
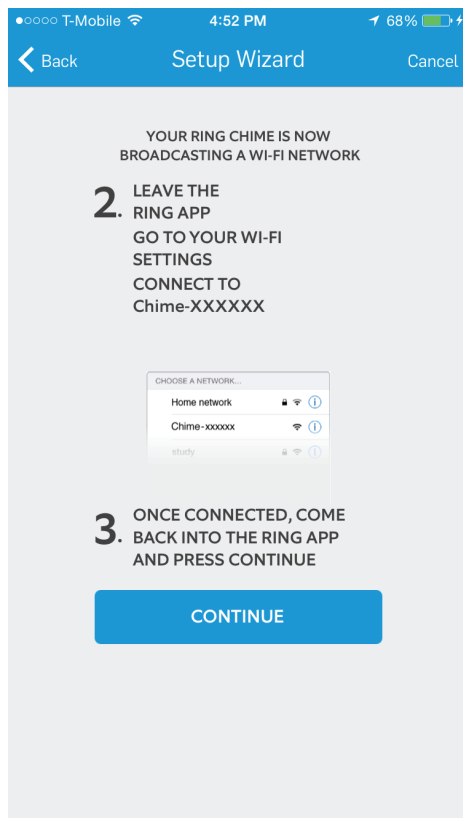
4. Name your Chime device.
5. Confirm your location.
6. Wait for the Ring logo located on the front of the device to pulse slowly.





CHIME WI-FI SETUP

7. Your Ring Chime is now broadcasting a Wi-Fi network.
Open your smartphone or tablet's Wi-Fi settings and connect to the network labeled **Chime-xxxxx**
8. Return to the Ring App and press Continue.





CHIME WI-FI SETUP

9. Select the Wi-Fi network that you would like your Ring Chime to connect to.
10. Enter a Wi-Fi password if necessary.
11. Once connected, you will be prompted to select which Ring Video Doorbells you would like to pair your Chime to.

