

285mm

142.5mm

.00



Quick Installation Guide



Model: FN3104W-B4

V1.0.2
EQ310417
- 1 -

1 Security Warning

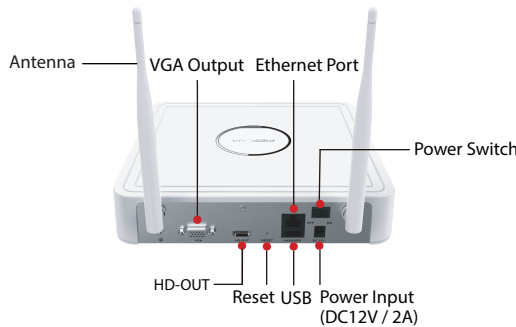
- Please change the password of your Foscam NVR APP account, NVR and cameras username regularly, the password should be the combination of numbers, letters and special characters.
- Please keep the username and password of your cameras, NVR and Foscam NVR APP account safe.
- Please update your camera to the latest firmware, which make you have better product experience and ensure the safety of your NVR and cameras.

2 Package Contents

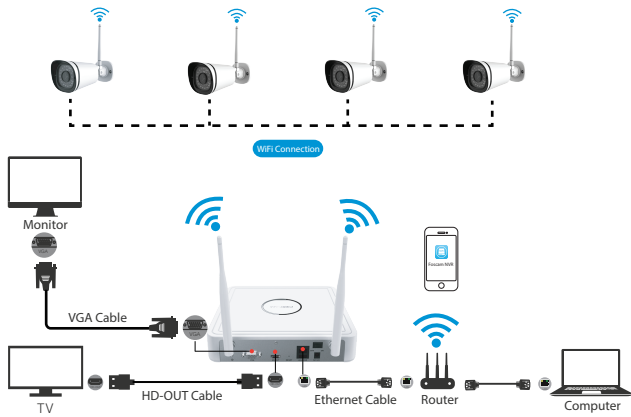
4-Channel NVR		
720P Bullet IP Cameras	1.5m (5 ft) Ethernet Cable	
4 Power Adapters for IPC	1 Power Adapter for NVR	
Quick Installation Guide	Warranty Card	
USB Mouse	Screw Pack	
CD	/	

- 2 -

3 NVR Structure



4 Wireless Connection

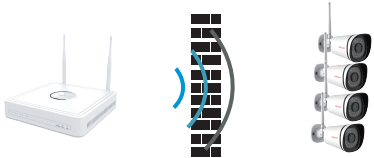


- 3 -

5 Interference

A clear line-of-sight connection between NVR and IP cameras provides the strongest wireless signal up to 525ft / 160m away. The signal may be weakened in the scenarios below.

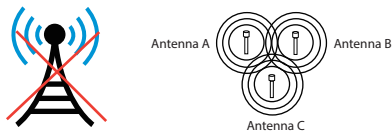
1. There is a barrier between NVR and IP cameras, such as wall made of cement, iron, tree, etc.



2. There is other electrical equipment running nearby, such as microwave oven, fridge, etc.



3. WiFi NVR is placed near other wireless signal sources, such as radio transmitting tower, voltage transformer, other wireless router, etc.



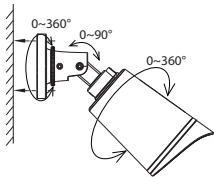
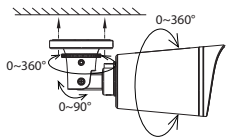
4. The weather is bad, such as rainy, thundering, cloudy, etc.



- 4 -

6 Cameras Installation

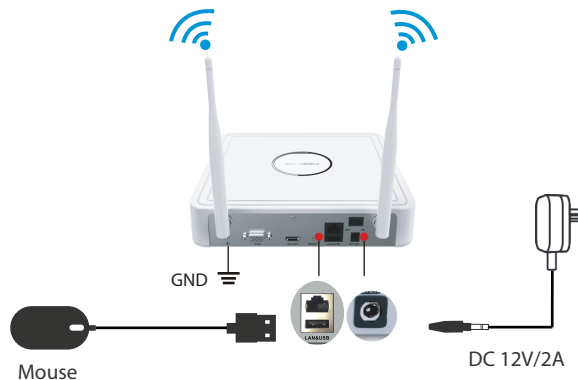
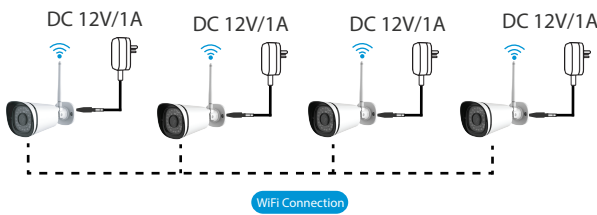
Fixate the camera on your preferred location and use screws to mount it. We have provided screws in the package.



Please Note:

Ensure that the rain or water will not reach the connector ports at the end of the pig tail wiring. These connectors are not weather-resistant.

7 Power On



Connect the powers as the figure above, and make sure the NVR is connected to the ground, then turn on the power switch on the rear panel.

After the NVR starts up successfully, the Power LED, HDD LED and LAN LED indicators will turn green.

- 6 -

8 Preview

For the initial login, please set a new password and follow the Setup Wizard to finish the setting.

Note: It may take 1 to 2 minutes for the Live View interface appear, please wait patiently.



Status Icons

This icon indicates that this camera is currently recording.

This icon indicates that the motion detection of this camera has been triggered.

Toolbar

Left click with the mouse once on one of the live video channels available, the toolbar will pop up.



1: Audio 2: Playback 3: Recording 4: Camera Name 5: Full Screen
- 7 -

9 Playback

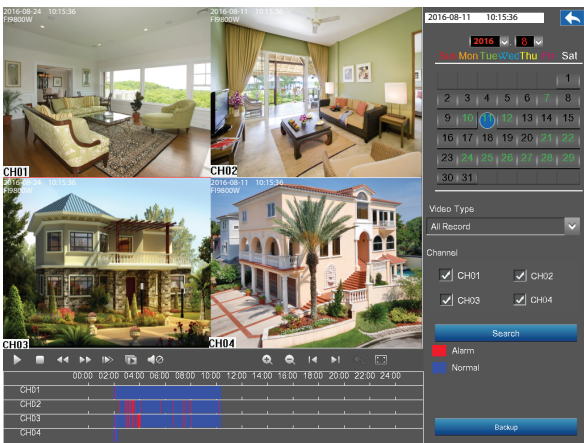
You can view the recording video of the cameras.

Steps:

Right click the mouse in the Live View mode, select the **Playback > Date > Video Type > Search**, then click to view recording video.

Note:

The green date indicates there is recording files on the day.



- 8 -

95.00mm

190.00mm

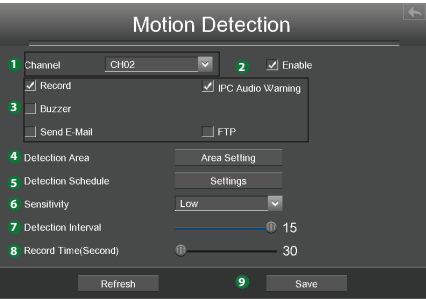
285.00mm

380.00mm

10 Motion Dection

Motion detection is a feature which can take alarm response actions and record the video for the motion occurred in the surveillance scene.

Right click the mouse on the Live View screen, choose **Menu > Settings > Alarm > Motion Detection**.

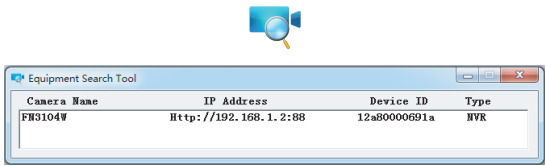


1. Select the channel from the **Channel** drop-down box.
2. Check the **Enable** checkbox to enable motion detection.
3. Check the checkbox to select the linkage method.
4. Click the **Area Setting**. Click and drag the mouse on the live video image to draw a motion detection area.
5. Click the **Settings**. Check the **Select** checkbox, then click and drag the mouse on the schedule to draw a motion detection schedule.
6. Select the sensitivity from the Sensitivity drop-down box.
7. Move the slider to set the Detection Interval.
8. Move the slider to set the Record Time of the motion detection.
9. Click the **Save** button to take effect.

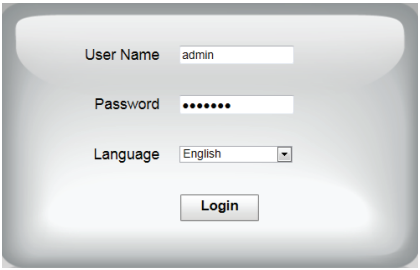
11 Log In On Web

You can access to the NVR via the browser in LAN.

1. Copy the "Equipment Search Tool" from the CD to your computer. Open it, and it will display information of the NVR and cameras in your LAN.



2. Double click the NVR in the list, and your default browser will open up to the login page.
- When log in the NVR for the first time, you will need to install the add-on, then the NVR will prompt you to change your password.
3. On the login page, enter the **User Name** and **Password** of your NVR, and select the **Language**. Then click the **Login** button.



12 Backup Online

You can backup the recording files to the USB flash disk or PC.

Select the (Playback) > (Download) > select a recording file, then click Download to download the recording video.



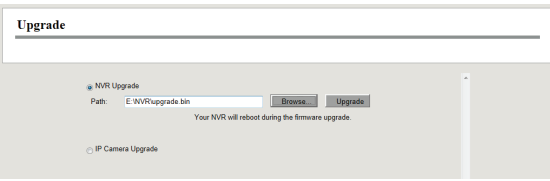
13 Upgrade Online

You can upgrade your NVR system or cameras by the web page. During the upgrade, make sure that the NVR and cameras are powered up.

On the web page of the NVR, click the icon , select **System Management > Upgrade** to upgrade your NVR or camera.

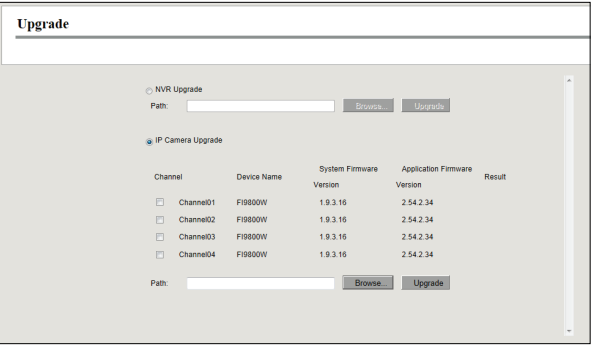
Upgrading NVR

Check the **NVR Upgrade**, then click the **Browse...** button to choose the upgrade file of the NVR. Click the **Upgrade** button to upgrade the NVR.



Upgrading IP Camera

Check the **IP Camera Upgrade**, then check the channel. Click the **Browse...** button to choose the upgrade file of the camera. Click the **Upgrade** button to upgrade the camera.



Please Note

If you want to upgrade the camera in the kit. Please make sure that the camera is connected to NVR through the cable, so that the camera has always been powered on.

14 Foscam NVR App

With the free APP, you can turn your iOS or Android smartphone into a monitoring centre for your NVR security system.

Download the APP



You can scan the QR Code on the above, it will take you to the download page to install the **Foscam APP**.

You can also simply go to the App Store or Google Play and search for the term "**Foscam NVR**". Download the APP to your smartphone.

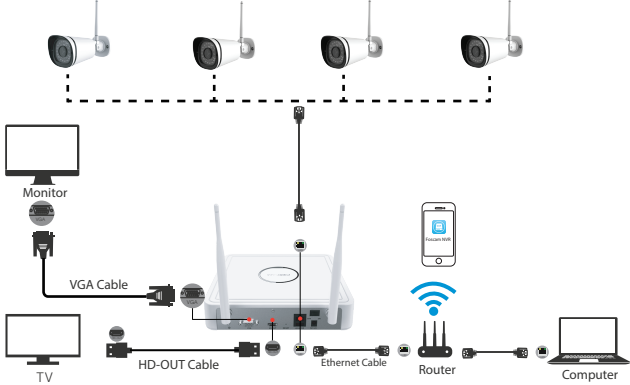


Foscam NVR

Access the NVR

Run the APP, and then register for a Foscam account. Once logged in, you can tap the "+" button on the APP and follow the setup wizard to add your NVR.

15 Wired Connection



When the IPC is FI9800W which is not provided in package, you can follow the steps as below to add the IPC to the NVR.

1. Power on NVR and IPC, then connect the IPC to NVR with an Ethernet cable, and wait for a minute, the Live View interface will appear on monitor.
2. Disconnect the Ethernet cable between IPC and NVR, and wait for a minute, the IPC will connect the NVR with WiFi automatically.

Note: During the IPC connecting to the NVR with WiFi, the Live View interface may disappear from the monitor, please wait patiently.

16 Technical Support

If you have problems with your Foscam device, please contact the reseller you purchased from, or you can e-mail the headquarter technical support team: **tech@foscam.com**

Your valuable comments and suggestions on improving Foscam products are welcomed!



CE Certificate Website:
<http://www.foscam.com/company/ce-certificate.html>

www.foscam.com