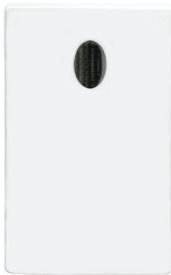


Dusk to Dawn Sensor

Model No. LW801

Instruction Manual



Connect Series

www.lightwaverf.house

EC DECLARATION OF CONFORMITY

Responsible Authority:

LightwaveRF PLC,
Innovation Campus Birmingham
Faraday Wharf
Holt Street
Birmingham
B7 4BB

Tel: +44 (0)121 250 3625
Email: enquiries@lightwaverf.com

Model Number(s):

JSJSLW801

Description:

Dawn to Dusk Sensor

Directives this equipment

Complies with:

2006/95/EC The Low Voltage Directive N/A
2004/108/EEC The Electromagnetic Compatibility Directive
1999/5/EC R&TTE Directive
93/68/EEC CE Marking Directive

Standards Applied in order to verify compliance

Safety: BS EN 60730-1: 2011

Health:

R&TTE: EN 301 489-1 V1.9.2: (2011-09), EN 301 489-3 V1.4.1: (2002-08)
EN 300 220-1 V2.1.1: 2006, EN 300 220-2 V2.1.2: 2007
EMC: EN 301 489-1 V1.9.2: (2011-09), EN 301 489-3 V1.4.1: (2002-08),
EN 55022: 2010, EN 61000-3-2: 2006 +A1: 2009 +A2: 2009 Class A,
EN 61000-3-3: 2008, EN61000-4-2: 2009,
EN 61000-4-3: 2006 +A1: 2008 +A2: 2010, EN 61000-4-4: 2012,
EN 61000-4-5: 2006, EN 61000-4-6: 2009, EN 61000-4-11: 2004

For and on behalf of LightwaveRF PLC

Name
Position

J Shermer
Managing Director



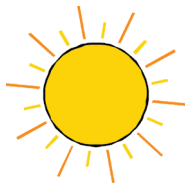
How do I get started?

Please refer to the following instructions that will guide you through the setup of a LightwaveRF Dusk to Dawn Sensor. Once successfully setup, the Sensor will automatically switch on and off LightwaveRF devices at dusk or dawn.



How does it work?

The Dusk to Dawn Sensor is a wireless and portable sensor and should be positioned in a place suitable to measure the ambient light level. As it is waterproof, It can be positioned outdoors, although it must be within the 15m range of the LightwaveRF devices intended to be switched.

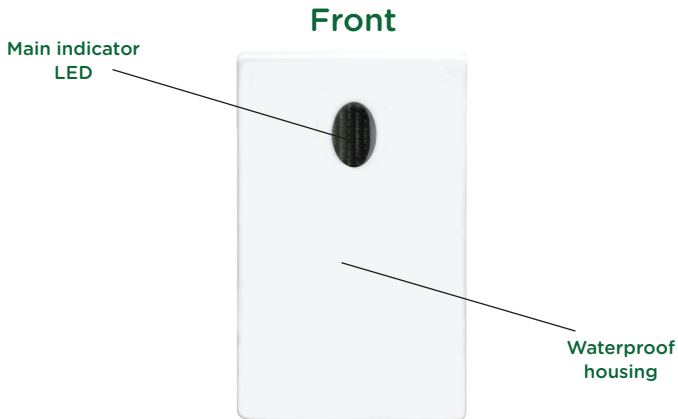


Help video & further guidance

For additional guidance, and to watch a video that will help guide you through the installation process, please visit the support section on www.lightwaverf.com



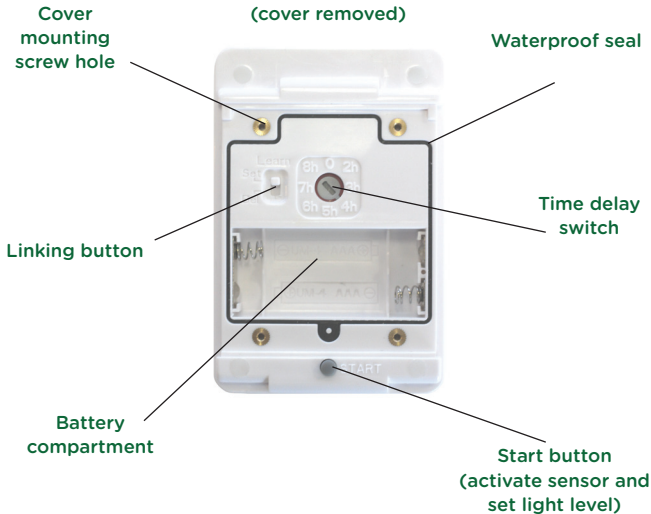
Overview



IMPORTANT: Please retain these instructions for guidance on how to link the sensor to other LightwaveRF devices. For additional guidance please visit the support section on www.lightwaverf.com

Back

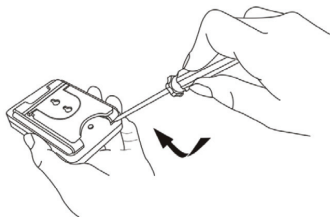
(cover removed)



Removing the back cover

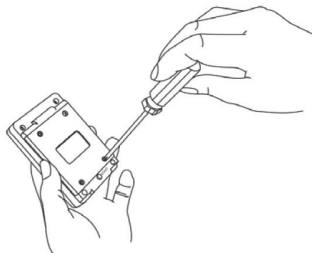
In order to setup the Dusk to Dawn Sensor, and to insert or replace the batteries, the back cover must first be removed.

- 1.** Gently unhook the rear stand using a flathead screwdriver as shown.



- 2.** Unscrew the back cover using a suitable screwdriver.

NOTE: When reassembling, it is important that the back cover is screwed on securely in order to retain the waterproof quality of the sensor housing.



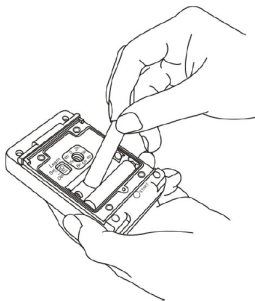
Inserting the Batteries

The battery compartment is accessed from the rear of the switch beneath the cover. 2 x AAA batteries are required (not included). Once fresh batteries have been inserted, the start button must be pressed to (re)activate the sensor.

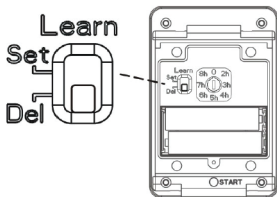
NOTE: When the batteries are low, the Sensor light will flash every 3 seconds.

Linking the sensor to a LightwaveRF device

1. Place the LightwaveRF device that you wish to control (e.g. Dimmer) in 'linking' mode. For information on how to do this please refer to the instruction manual for that specific LightwaveRF device.



2. Whilst the LightwaveRF device is in linking mode, switch the 'learn' slider on the sensor to the 'del' or 'set' position (either is ok). This action will send out a command instructing the sensor to link to the device. Repeat this step to link to as many LightwaveRF devices as desired.



3. The LED on the LightwaveRF device receiving the linking command should flash to indicate that the linking attempt has been successful.

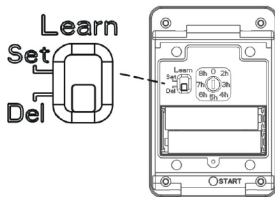


Unlinking the sensor from a LightwaveRF device

1. Place the LightwaveRF device that you wish to remove in 'linking' mode. For information on how to do this please refer to the instruction manual for that specific LightwaveRF device.



2. Whilst the device is in linking mode, switch the 'learn' slider on the sensor to the 'set' or 'del' position (either is fine). This action will send out a command to unlink the LightwaveRF device.



3. The LED on the LightwaveRF device receiving the command should flash to indicate that the unlinking attempt has been successful.



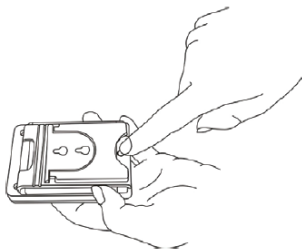
Setting the light level

IMPORTANT: To promote reliable operation, try to ensure that the Dusk to Dawn Sensor is positioned where it will not be affected directly by bright, artificial lights that will interfere with the sensor.

Setting the light level alters the preset at which the sensor will automatically turns on/off LightwaveRF devices. The level can be set by pressing the 'start' button which activates the sensor. There are two methods:

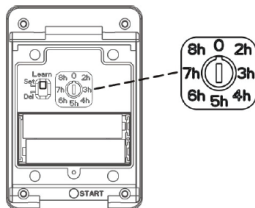
1. Press and release the 'start' button. This will instruct the sensor to send out an on or off command when light levels reach the factory preset (10 lux).

2. Hold the 'start' button for 3 seconds (sensor light will flash for several seconds). This will instruct the sensor to learn the current light level in its immediate environment and use this level to trigger devices.



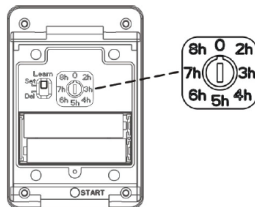
Setting the time delay

The time delay function consists of a rotary switch with preset hour marks. If the switch is set to '0', then there is no time delay set. The sensor will turn on/off any LightwaveRF device once the light level has gone below/above that setup by the user.



If the delay switch is set to one of the hour marks, then the linked LightwaveRF device will still be turned on at the preset light level; however, once the specified amount of time has elapsed, the Sensor will automatically send an 'off' command, and the receiver will turn off.

NOTE: If the RF range between the transmitter and receiver is too great to achieve reliable operation, the LightwaveRF Connect Signal Booster may be used in conjunction with this product to increase the signal strength over greater distances.



Specification

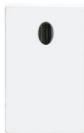
RF frequency: 433.92 MHz

Input rating: 1.5V (2 x AAA Batteries)

Range: 15m (indoors)

Warranty: 2 year standard warranty

IP56 Approved.



Lightwave^{RF}

MEGAMAN[®]

2 Quadrant Park
Mundells
Welwyn Garden City
Herts
AL7 1FS
01707 386035

www.lightwaverf.house