

Lightwave RF

Wire Free MP3 Door Chime Kit

Fitting Instructions

It is important to install this product in accordance with the fitting instructions below. Failure to do so may render your guarantee void.

IMPORTANT: PLEASE RETAIN THESE INSTRUCTIONS FOR FUTURE REFERENCE WHEN REPLACING BATTERIES

- 1) Before commencing work, you will require a drill and cross-headed screwdriver.
- 2) 2 x 1.5V C size batteries
- 3) Avoid positioning on UPVC Frames.
- 4) Avoid positioning above heat sources such as radiators or in damp areas such as a kitchen or bathroom.

Fixing screws and wall plugs are supplied with this kit.

Pressing the Push Button sends a wireless signal which activates the chime. The operating range is 150-180m (in open field) and you can use the chime virtually anywhere in the home or garden. However, the transmission range will be reduced if the signal is transmitted through a number of walls or ceilings and Metal or UPVC doorframes can also reduce the operating range.

IMPORTANT: Before you drill any holes in the wall, please make sure there are not any cables or pipes that you may accidentally damage.

Battery Installation

Push button unit

Push button uses a 3volt CR2032 Lithium battery (included), to activate remove the isolation strip.

To replace open the push button (slide the flat screwdriver in the opening on the bottom and press the tab down) and replace ensuring correct battery polarity.

Door Chime unit

Remove the battery cover and insert 2 x 1.5v batteries (AA, UM3 & LR6 - not included); ensure battery polarity match the internal markings. The door chime is now ready to learn the operation code (Please see Digital Code Set Up).

Low Battery Indicator

Red LED indicator will flash when the chime batteries need replacing.

Installation Guide

To install you will require a drill and cross-headed screwdriver.

Push Button Unit

Mount using the two holes at the back of push button. Mounting on UPVC or metal doorframe surfaces will reduce the broadcasting range.

Important: Test the push and chime before mounting to ensure good signal

Door Chime Unit

Hang using the hole on the back of the unit. Avoid positioning on UPVC Frames, above heat sources (e.g. radiator) or in damp areas such as a kitchen or bathroom.

Important: Test the Chime before drilling any holes to ensure unit is within operating range.

Digital Code Set Up

The Door Chime kit is equipped with advanced random and self-learning operation code ability.

1. First time operation:

After battery installation on both Push Button and Door Chime units, press the Push Button once to generate a new operation code.

The Chime will sound to indicate that a new operation code is registered and memorized.

NB. The Chime unit has 2 minutes to learn the operation code after batteries are installed.

2. Interference from another chime operating nearby (i.e. Chime sounds for no reason):

Remove the batteries from the Push Button and Door Chime units and rest for 10 seconds, this will erase the memory.

Insert the batteries and the units are ready for the new code registration.

3. Front and back door Push Button operation (2nd Push Button is not included):

a) Remove the batteries from the Push Buttons (Front & Back Door) and Door Chime unit and rest for 10 seconds, this will erase the memory.

b) Insert the batteries into the Push Buttons (Front & Back Door) and Door Chime unit, and the chime unit is ready for the new code registration.

c) Press the front door push once, it will generate a new operation code randomly and send a wireless signal to the door chime unit which will sound to indicate that a new operation code is registered and memorized.

d) Next (within 2 minutes) press the back door push button once, it will generate a new operation code randomly and send a wireless signal to the door chime unit which will sound to indicate that a second operation code is also registered and memorized.

e) It is important to remember that when you replace your chime batteries that you will need to follow the same procedure of pairing the devices as above.

Important: Repeat this procedure after changing the Push Button battery.

NB: If the chime unit sounds for no reason during the digital code setting, it is indicated that it has been interfered by other similar chime unit nearby, reset the digital code as per point 2 above.

Melody Selection

The melody selector is a small switch located inside the Push Button, at the top right corner of battery compartment and marked with "S". Press the switch to change to next melody of the 8 pre-stored:

- 1) Westminster 2) Ding Dong 3) Ding-Dong-Ding 4) Tubular - 1 5) Orchestra 6) Tubular - 2 7) Trumpet 8) Dog Barking

Download To Change The Melody

Firstly create a folder to store your music/melodies in MP3 or WAV format at your "Desktop". Connect the USB link with the door chime unit and your computer, the program will auto-run by itself, after then your computer will show the download program display.

Note: If the program does not start, double click MY COMPUTER; double click CDROM (with logo).

Program supports: Windows 2K, XP, and Vista.

- a) **Auto-Run:** The program will auto-run by itself, after then your computer will show the download program display. "My Computer" column will show your "Desktop" programs/files.

Note: If the program does not start, double click My Computer then double click CDROM (with logo).

- b) **Editing:** MP3 or WAV files may need to be reduced in size to create an appropriate chime melody. Click your music/melody folder twice; the music/melody will be listed on the "Music" column. Select the music/melody that wants to edit by click it once, after then the music/melody sound wave will be displayed. Hold the left button on your mouse at the start of the selected section and drag your mouse to the end of selected section, then release the left button, the window at bottom right corner of the sound wave bar will show the duration time of this section. You can play the selected section by press the play button on the bottom left corner of the sound wave bar.

Remark: The door chime melody duration time should ideally be 8-15 seconds.

- c) **Build up the Play List:** After edited the music/melody, you can transfer it to the play list by click the large "Green Arrow" button in the centre once, the edited melody is imported to the Play List and displayed. You can build up total 8 different music/melodies on the Play List to replace the pre-stored melodies.

Remark: If the Play List already has 8 melodies stored, you have to delete 1 or more melodies from the Play List to make room before transfer the edited/new melody to the Play List.

- d) **Play or Delete in the Play List:** You can play or delete the edited music/melody on the play list. Click the music/melody once, the "Play", "Stop" and "Delete" buttons will be appeared at the bottom of the Play List column, then click the "Play" or "Delete" button once to play or delete this music/melody.

- e) **Synchronize:** After the 8-melodies Play List is built, you have to synchronize it to the door chime by click the "Sync" button in the centre once and the door chime will store the music/melody on the Play List in the memory. "Synchronize is finished" icon will pop up for confirmation.

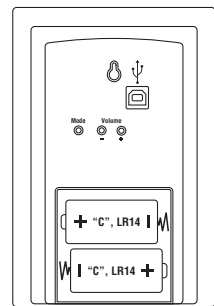
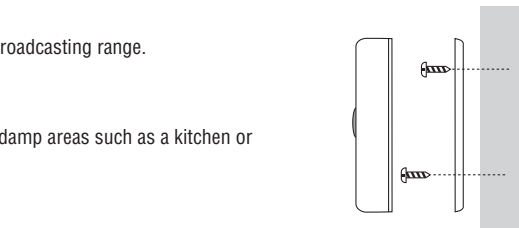
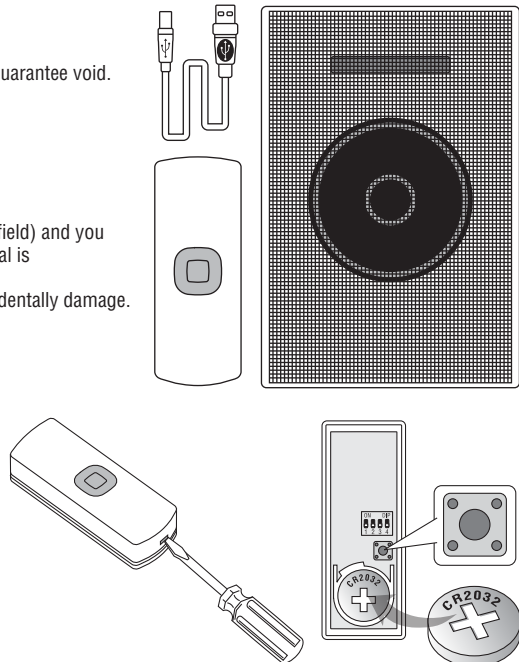
Note: Always synchronize your door chime before disconnect the USB cable.

- f) **Memory:** The door chime has 8 MB memory to store (Approximates 8-9 minutes) the music/melodies. The memory bar is showing the percentage of memory has been used.

- g) **Disconnect:** Disconnect the USB cable then the door chime is ready to use.

- h) **Melody Selection:** Select one of the melodies on your play list as your door chime sound by press the melody selector switch inside the push button (refer to Melody Selection), after then the door chime will only play the selected melody.

Model: LW6007



Door Chime Operation

Press the button on the Push Button unit once, it sends a wireless signal to the Door Chime, Door Chime unit will sound.

The sound will stop as soon as the melody ends. For repeat sound, press the button again.

Hold the button in will NOT repeat the sound.

Adjust the volume

Press the + or - button on the back of the door chime unit to adjust the sound level.

Operate LWRF Remote Switch

The push comes factory set with no LWRF command and will flash once when operated, Once you select a LWRF function using the dip switches the push will flash twice.

Set the dip switch on the Bell Push to the following position, the LWRF receiver will be operated accordingly.

NOTE: Please refer to individual LightwaveRF product for pairing instructions.

Dip Switch	1	2	3	4	Function
	Off	Off	Off	Off	No Light
	Off	Off	Off	On	Flash
	Off	Off	On	Off	3 Seconds
	Off	Off	On	On	30 Seconds
	Off	On	Off	Off	1 Minute
	Off	On	Off	On	2 Minute
	Off	On	On	Off	5 Minute
	Off	On	On	On	Random
	On	Off	Off	Off	10 Minute
	On	Off	On	Off	On
	On	Off	On	On	Off
	On	Off	On	On	Random
	On	On	Off	Off	Flash x 2
	On	On	Off	On	Random
	On	On	On	Off	Random
	On	On	On	On	Random

Important

1. Do not mount the Push Button onto any metal surfaces or UPVC doorframe, as this will reduce the operation range seriously.
2. Do not mount either unit close to fireplace or expose to high temperature.
3. Do not use different type of batteries, or mix up old and new batteries.
4. Batteries should be inserted and removed by an adult only.
5. Always use alkaline batteries. Please dispose of old, defective batteries in an environmentally friendly manner in accordance with the relevant legislation.
6. Make sure that no naked flame sources, such as lighted candles, should be placed on the unit.
7. The unit should not be exposed to dripping or splashing and no objects filled with liquids, such as vases, should be placed on the unit.
8. **CAUTION:** Make sure batteries are installed correctly as per the internal markings.
9. **CAUTION:** Replace only with the same or equivalent type of battery that is recommended by the manufacturer.
10. **CAUTION:** Danger of explosion if battery is incorrectly installed or replaced.
11. **IMPORTANT:** There are no serviceable parts in the units, do not attempt to repair it.

User Hints

If the door chime unit does not sound, please check the following:

- a) Flat batteries in either Push Button or Door Chime units - change the batteries.
- b) Wrong battery polarity in either Push Button or Door Chime units - reinsert the batteries.
- c) Both Push Button and Door Chime units are not on the same operation codes - reset the code (see digital code set up).
- d) Push Button and Door Chime did not register the operation code after change of battery - reset the code (see digital code set up).
- e) B/O door chime unit does not register any operation code after batteries changed - reset the code (see digital code set up).
- f) Units are out of range - Operate the Chime unit within the operation range.
- g) Can not store music in the Play List - If the Play List already has 8 melodies stored, you have to delete 1 or more melodies from the Play List to make room before transfer the edited/new melody to the Play List and the play list can only store 8 melodies (max).
- h) No melody/song stored in the Door Chime unit - Synchronize your door chime before disconnect the USB cable.

Specification

Operating Temperature: Chime Unit: +10C - +35C (Indoor use only)

Push Button Unit: -10C - +35C

Operating Distance: 90-100metre (297-330ft approx.- in open field & at suitable condition)

Selectable Tone: Total Eight (8) melodies available

Digital Code: Pre-set, one of two hundred fifty six (256) possible digital codes, non-selectable

Memory Size: 8 MB Memory

Music/Melody: (a) Support all MP3 format (All i-Pod MP-3 file can not be supported)

V1 – MPEG Version 1, V2 – MPEG Version 2 & Version 2.5,

L1 – Layer I, L2 – Layer II, L3, Layer III.

Sampling rate frequency index (values are in Hz) bits:

MPEG1	MPEG2	MPEG2.5
44,100	22,050	11,025
48,000	24,000	12,000
32,000	16,000	8,000

(b) Support all WAV files.

Program Support: Microsoft 2000, XP, Vista & Window 7

R2 Device - device where the sound output is created by the initial operation of the control and when the period of sound output continues for the designed duration irrespective of condition of the control.



Symbol  indicating separate collection for electrical and electronic equipment.

